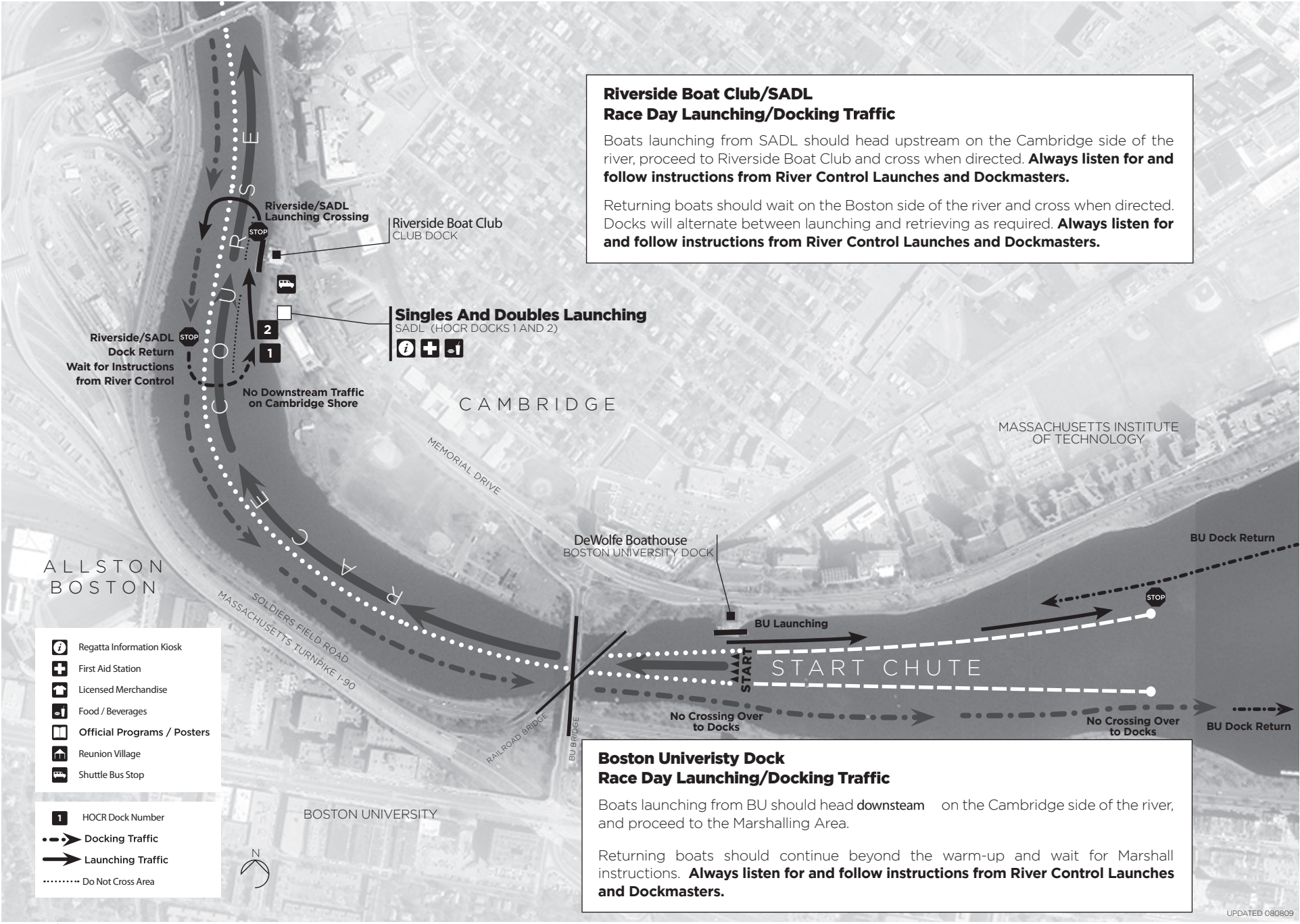


# HEAD OF THE CHARLES® REGATTA

## Race Course Map MAP 1

DESIGN: CARLOS RIBBEJEO | CARBOSSA.COM PHOTO: COMMONWEALTH OF MASSACHUSETTS



**Riverside Boat Club/SADL  
Race Day Launching/Docking Traffic**

Boats launching from SADL should head upstream on the Cambridge side of the river, proceed to Riverside Boat Club and cross when directed. **Always listen for and follow instructions from River Control Launches and Dockmasters.**

Returning boats should wait on the Boston side of the river and cross when directed. Docks will alternate between launching and retrieving as required. **Always listen for and follow instructions from River Control Launches and Dockmasters.**

**Boston University Dock  
Race Day Launching/Docking Traffic**

Boats launching from BU should head downstream on the Cambridge side of the river, and proceed to the Marshalling Area.

Returning boats should continue beyond the warm-up and wait for Marshall instructions. **Always listen for and follow instructions from River Control Launches and Dockmasters.**

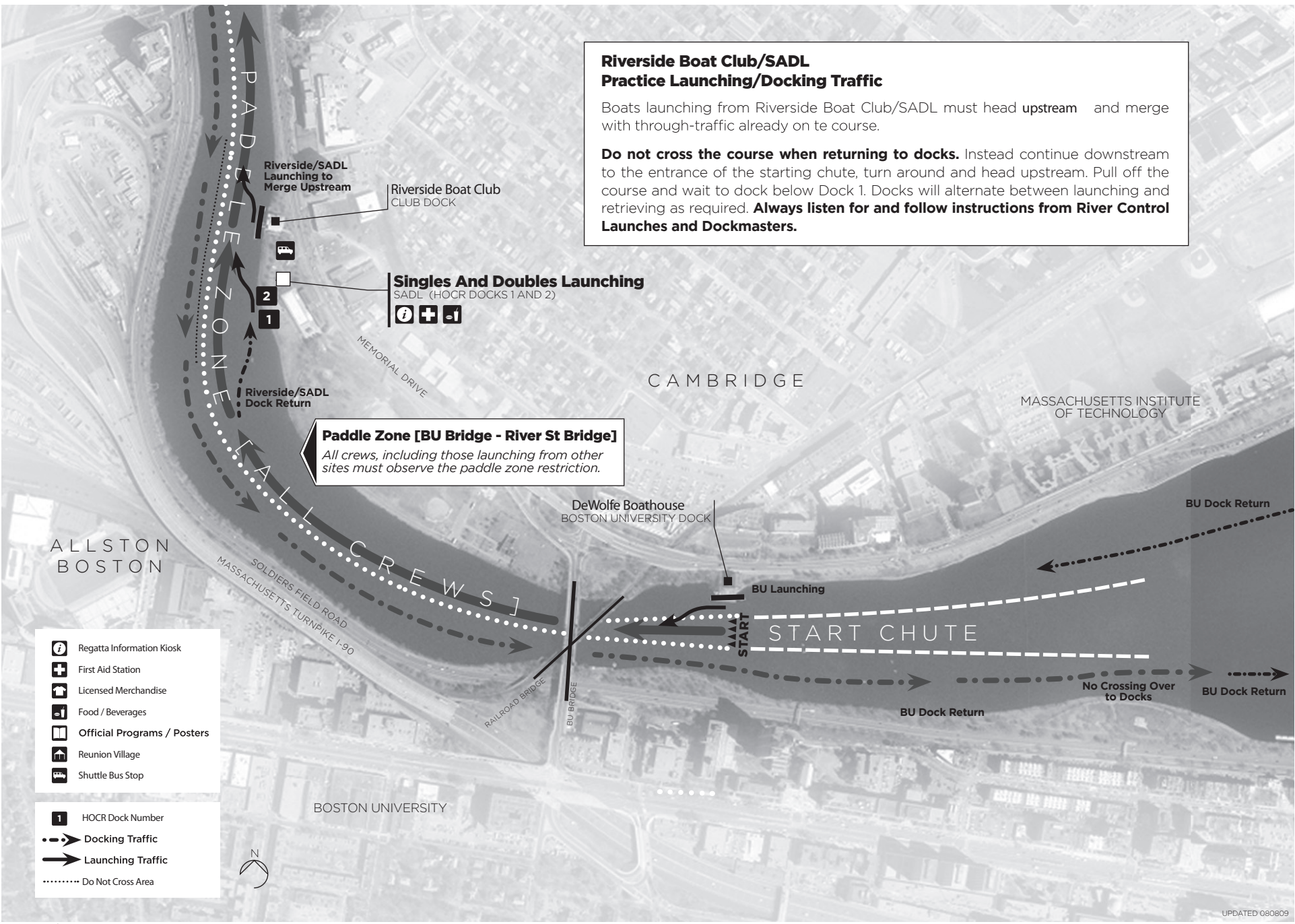
DESIGN: CARLOS RIBBEJEO | CARTOONSSA.COM PHOTO: COMMONWEALTH OF MASSACHUSETTS

UPDATED 080809

**Riverside Boat Club/SADL  
Practice Launching/Docking Traffic**

Boats launching from Riverside Boat Club/SADL must head **upstream** and merge with through-traffic already on the course.

**Do not cross the course when returning to docks.** Instead continue downstream to the entrance of the starting chute, turn around and head upstream. Pull off the course and wait to dock below Dock 1. Docks will alternate between launching and retrieving as required. **Always listen for and follow instructions from River Control Launches and Dockmasters.**



**Paddle Zone [BU Bridge - River St Bridge]**  
All crews, including those launching from other sites must observe the paddle zone restriction.

- Regatta Information Kiosk
  - First Aid Station
  - Licensed Merchandise
  - Food / Beverages
  - Official Programs / Posters
  - Reunion Village
  - Shuttle Bus Stop
- 
- HOCR Dock Number
  - Docking Traffic
  - Launching Traffic
  - Do Not Cross Area