



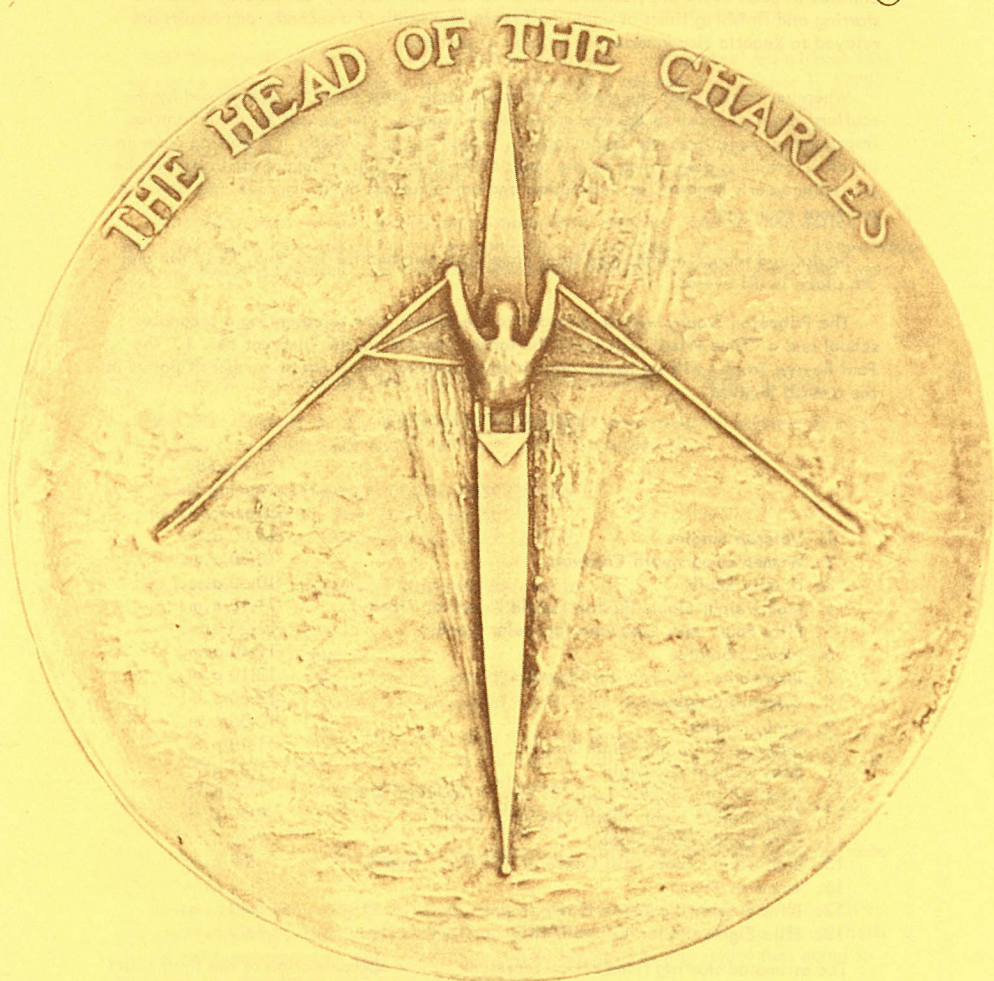
# HEAD OF THE CHARLES

REGATTA SUNDAY, OCTOBER 26, 1975

Eleventh Annual Regatta

# HEAD OF THE CHARLES

®



Sunday, October 26, 1975

EIGHTS, FOURS, PAIRS, DOUBLES, SINGLES-SCHOOLS, COLLEGES, CLUBS

**BOSTON, MASSACHUSETTS, U.S.A.**



THE ANNUAL HEAD-OF-THE-CHARLES REGATTA continues its phenomenal growth. In 1974, the Regatta's tenth year, a record-breaking field of 2,437 competitors in 542 boats sped through the starting gate and raced to the Phototimer three miles upstream, responding to the cheers of several thousand spectators lining the banks of the historic Charles River.

Looked upon in college and schoolboy circles as an incentive for greater summer conditioning and a new goal for fall training, the HEAD-OF-THE-CHARLES has received enthusiastic support from rowing coaches everywhere. Scullers and club crews have found that, in addition to keeping them "hard at it" for an additional eight weeks, it provides them a unique opportunity to match blades with their collegiate counterparts.

Patterned after the world famous "Head-of-the-River" race in England, the Regatta entails the individual timing of hundreds of racing shells over a three mile course. Entrants in each Event are started at about 15 second intervals, computers record the starting and finishing times of each shell down to a tenth of a second, and results are relayed to Regatta Headquarters as quickly as possible.

Wherever applicable, the starting order in single sculls Events is determined by the scullers' order of finish in the preceding year's Regatta, and except for mixed entries (representing more than one organization), which are not seeded, the starting order in all other Events is determined by the order of finish by Club or School affiliation in the preceding year's Regatta, as individuals and organizations try to improve their starting positions each year.

Sculptured bronze medals (see front cover) are awarded for 1st, 2nd, 3rd, 4th and 5th place in all events.

The Princeton Trophy will be awarded to the fastest crew representing a secondary school and a "Time Prize" will go to the fastest Veteran sculler in Event No. 1. The Paul Revere Trophy will go to the organization amassing the greatest number of points in the overall Regatta.

#### ORDER OF EVENTS

	Estimated Starting Time (Standard Time)
1. Veteran Singles	10:00 a.m.
2. Women's Fours with Coxswain	10:30 a.m.
3. Double Sculls	10:50 a.m.
4. Lightweight Eights (Boston Herald American Trophy)	11:10 a.m.
5. Elite Fours with Coxswain (Schaefer Trophy)	11:25 a.m.
6. Novice Singles	11:40 a.m.
7. Intermediate Fours with Coxswain	12:10 p.m.
8. Women's Singles	12:30 p.m.
9. Junior Eights	12:55 p.m.
10. Intermediate Lightweight Singles	1:10 p.m.
11. Pairs without Coxswain	1:35 p.m.
12. Intermediate Singles (Louis B. Hawes Memorial Trophy)	1:55 p.m.
13. Intermediate Eights (Boston Mayor's Trophy)	2:20 p.m.
14. Elite Lightweight Singles	2:40 p.m.
15. Lightweight Fours with Coxswain (M.D.C. Trophy)	3:00 p.m.
16. Women's Eights	3:20 p.m.
17. Elite Singles (Laurence Curtis Trophy)	3:40 p.m.
18. Elite Eights (Boston Globe Challenge Trophy)	4:00 p.m.

The estimated starting times above represent a close approximation of the final exact times which will appear in the Regatta Program. The order of Events will not change.

Veteran scullers must be at least 40 yrs. old and must give age (at nearest birthday) on Entry Form. An 8-second handicap will be granted for each year over 40.

The terms "Junior", "Intermediate", "Senior", and "Elite", are as defined by the NAAO.



Any person who won in an Intermediate Event in the '72, '73, or '74 Head-Of-The-Charles Regatta may not enter that Event in this year's Regatta.

All competitors in Women's Events must be females. Organizations that are members of the NWRA, but not the NAAO, may not be represented by male competitors.

Novice scullers must not have sculled in any regatta prior to 1975 nor have won any sculling race during 1975, and must not be Senior or Elite sweep-oarsmen.

No competitor may represent more than one organization in the Regatta. Mixed entries (composed of representatives from at least two different organizations) will not be seeded and they must be fully identified and must be authorized by the individual in charge of competitive rowing at each of the organizations represented thereby.

N.B.: The NAAO imposes a fine (plus registration fee) upon any organizations in the U.S.A. which fail to register oarsmen prior to their participation in any regatta in the U.S.A., except those conducted by and for educational institutions only.

Each Event will be limited to a maximum of 40 entries. Entries received without fees will not be assigned any priority, and will be returned if not paid by October 1, 1975. Entries received after October 1, 1975 will not be accepted. Changes in "boatings" will not be accepted after October 11, 1975, except as permitted by NAAO rules on substitutions. Because any accepted entry may have resulted in another's exclusion, withdrawing or scratching after October 1, 1975, is strictly prohibited.

Acknowledgement of entries will not be made until early in October when notice of their final disposition will be mailed as soon as it is determined. If an earlier acknowledgement of receipt is required, enclose a self-addressed stamped postcard, or use certified mail.

Entry fees:

Singles \$10.00      Pairs and Doubles \$15.00      Fours \$20.00      Eights \$30.00

Entry fees (Payable to "Head-of-The-Charles") must accompany all entries. Entries and fees (and nothing but entries and fees) are to be mailed to:

CHARLES/HEAD DATA ASSOCIATES  
Back Bay Post Office Box 587  
Boston, Massachusetts 02117 U.S.A.

All inquires (but not entries) should be directed to:

REGATTA  
P. O. Box 52  
Cambridge, Massachusetts 02138 U.S.A.  
Phone: (answering service) 617-354-3176 (between 8-9 p.m.)

Out-of-town competitors must make their own arrangements for accommodations, and are advised to make reservations early as the Regatta falls on the same weekend as major local college football games. Registration will open on Saturday, October 25, 1975, but weigh-ins will be conducted between 6 a.m. and 9 a.m. on Sunday, October 26, 1975. Lightweight scullers must not weigh more than 160 lbs. and lightweight crews must not average more than 160 lbs., nor contain any individual oarsman weighing more than 165 lbs.

At the request of certain local institution, whose rowing equipment and/or facilities are used extensively each year by visiting competitors. Crews planning to borrow shells should make arrangements well in advance and be prepared to pay rental fees equal to the entry fee associated with each class of boat.

PUBLICITY. . . and Press arrangements can be made through Promotion Chairman, Jerome Olrich, 158 Harvard Street, Newtonville, Massachusetts 02160. Tel. (7-9P.M.) 617-332-7395.

A new addition to the award-winning Head-of-The-Charles Regatta poster series, suitable for mounting or framing, may be obtained by sending \$3.00 for each poster (includes postage and handling) to "REGATTA POSTER", Box 52, Cambridge, Massachusetts 02138, U.S.A. Limited supplies of previous year's posters are also available.



THE ANNUAL HEAD-OF-THE-CHARLES REGATTA continues its phenomenal growth. In 1974, the Regatta's tenth year, a record-breaking field of 2,437 competitors in 542 boats sped through the starting gate and raced to the Phototimer three miles upstream, responding to the cheers of several thousand spectators lining the banks of the historic Charles River.

Looked upon in college and schoolboy circles as an incentive for greater summer conditioning and a new goal for fall training, the HEAD-OF-THE-CHARLES has received enthusiastic support from rowing coaches everywhere. Scullers and club crews have found that, in addition to keeping them "hard at it" for an additional eight weeks, it provides them a unique opportunity to match blades with their collegiate counterparts.

Patterned after the world famous "Head-of-the-River" race in England, the Regatta entails the individual timing of hundreds of racing shells over a three mile course. Entrants in each Event are started at about 15 second intervals, computers record the starting and finishing times of each shell down to a tenth of a second, and results are relayed to Regatta Headquarters as quickly as possible.

Wherever applicable, the starting order in single sculls Events is determined by the scullers' order of finish in the preceding year's Regatta, and except for mixed entries (representing more than one organization), which are not seeded, the starting order in all other Events is determined by the order of finish by Club or School affiliation in the preceding year's Regatta, as individuals and organizations try to improve their starting positions each year.

Sculptured bronze medals (see front cover) are awarded for 1st, 2nd, 3rd, 4th and 5th place in all events.

The Princeton Trophy will be awarded to the fastest crew representing a secondary school and a "Time Prize" will go to the fastest Veteran sculler in Event No. 1. The Paul Revere Trophy will go to the organization amassing the greatest number of points in the overall Regatta.

#### ORDER OF EVENTS

	Estimated Starting Time (Standard Time)
1. Veteran Singles	10:00 a.m.
2. Women's Fours with Coxswain	10:30 a.m.
3. Double Sculls	10:50 a.m.
4. Lightweight Eights (Boston Herald American Trophy)	11:10 a.m.
5. Elite Fours with Coxswain (Schaefer Trophy)	11:25 a.m.
6. Novice Singles	11:40 a.m.
7. Intermediate Fours with Coxswain	12:10 p.m.
8. Women's Singles	12:30 p.m.
9. Junior Eights	12:55 p.m.
10. Intermediate Lightweight Singles	1:10 p.m.
11. Pairs without Coxswain	1:35 p.m.
12. Intermediate Singles (Louis B. Hawes Memorial Trophy)	1:55 p.m.
13. Intermediate Eights (Boston Mayor's Trophy)	2:20 p.m.
14. Elite Lightweight Singles	2:40 p.m.
15. Lightweight Fours with Coxswain (M.D.C. Trophy)	3:00 p.m.
16. Women's Eights	3:20 p.m.
17. Elite Singles (Laurence Curtis Trophy)	3:40 p.m.
18. Elite Eights (Boston Globe Challenge Trophy)	4:00 p.m.

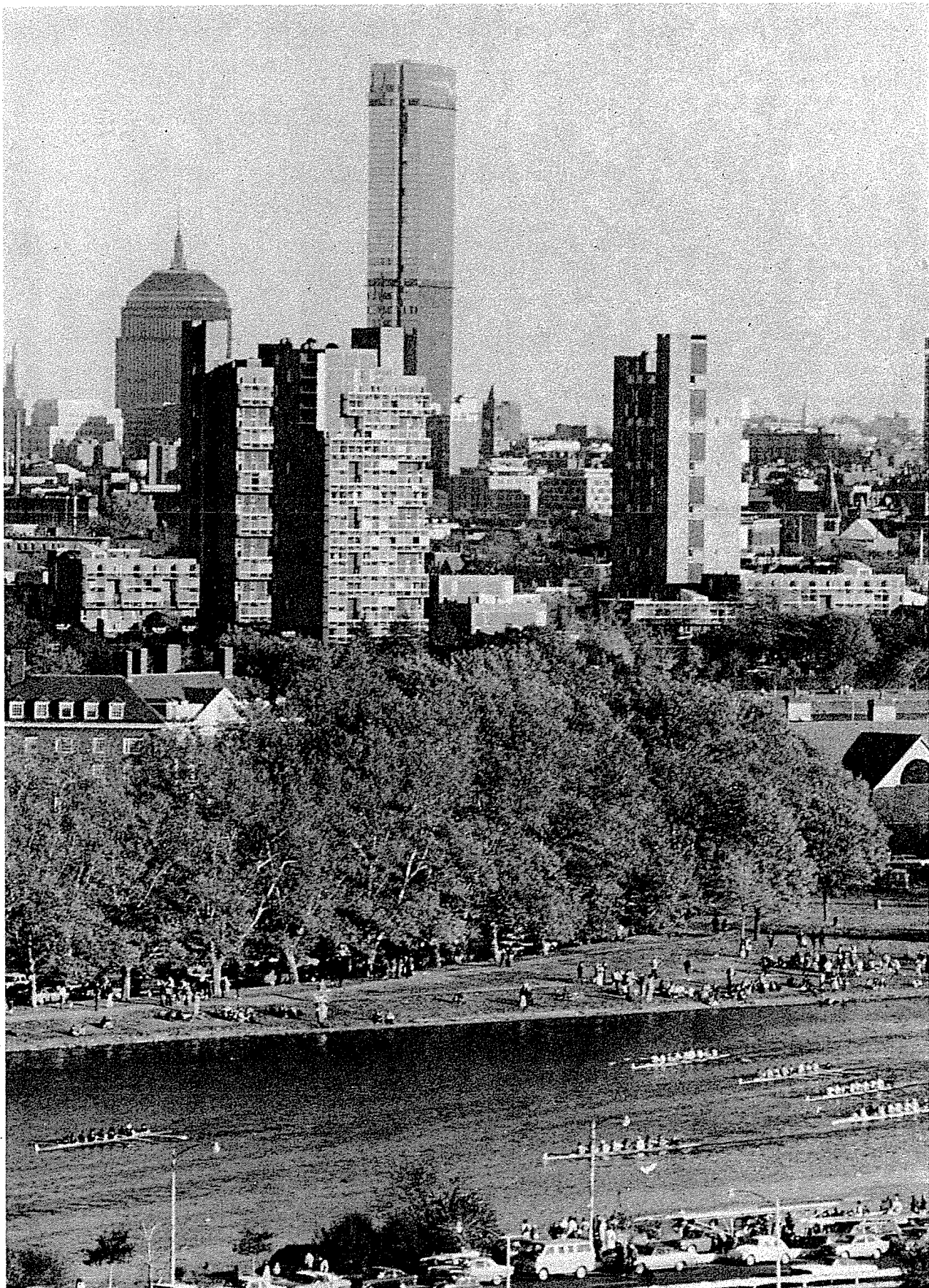
The estimated starting times above represent a close approximation of the final exact times which will appear in the Regatta Program. The order of Events will not change.

Veteran scullers must be at least 40 yrs. old and must give age (at nearest birthday) on Entry Form. An 8-second handicap will be granted for each year over 40.

The terms "Junior", "Intermediate", "Senior", and "Elite", are as defined by the NAAO.

# The Eleventh Annual Head of the Charles Regatta

Sponsored by the Cambridge Boat Club, Charles River, Massachusetts  
Course Distance: 3 miles upstream



TWO MILE MARK

COVER 1 INTERMEDIATE SCULLER ED LYNCH JR., CAMBRIDGE BOAT CLUB  
ALL PHOTOS ARE FROM THE 1974 REGATTA

Donation 50¢



## Foreword

THE ANNUAL HEAD-OF-THE-CHARLES REGATTA SPONSORED BY THE CAMBRIDGE BOAT CLUB IS PATTERNED AFTER THE MANY ENGLISH "HEAD OF THE RIVER" RACES. THESE MAKE USE OF A TORTUOUS COURSE WHICH NOT ONLY PUTS THE COXSWAIN'S STEERING TO TEST BUT ALLOWS GREATER DISTANCES TO CHALLENGE THE OARSMEN'S ENDURANCE. BY ELIMINATING THE NEED FOR QUALIFYING RACES, HEAD RACES ALSO ALLOW MANY MORE BOATS TO COMPETE IN A GIVEN AMOUNT OF TIME.

ALTHOUGH THE CONTESTANTS ARE ROWING AGAINST TIME, SPECTATORS ARE WITNESS TO KEEN COMPETITION BETWEEN BOATS WHICH TAKE RUNNING STARTS ONLY 10 SECONDS APART. BOATS ARE NUMBERED CONSECUTIVELY SO THAT IT IS EASY TO SEE THEIR RELATIVE POSITIONS IN EACH EVENT. TO MINIMIZE OVERLAPPING EVENTS AT THE FINISH, EACH EVENT IS STARTED 15 TO 30 MINUTES APART. NOTE THAT EACH BOAT IS IDENTIFIED BY A BOW MARKER WHICH CORRESPONDS TO ITS NUMBER IN THE PROGRAM.

SPECTATORS, THE BEST PLACE TO WATCH THE REGATTA IS AT THE FINISH LINE WHERE THE PROGRESS OF EACH EVENT ON THE RIVER AND THE UNOFFICIAL ORDER OF FINISH WILL BE ANNOUNCED BY LOUD-SPEAKERS. FOR SPECTATORS FARTHER DOWN THE COURSE, THE RIVER BANKS BETWEEN WESTERN AVENUE AND BOYLSTON STREET PROVIDE GOOD VANTAGE POINTS NEAR THE TWO MILE MARK.

THE REGATTA COMMITTEE WISHES TO EXTEND ITS SINCERE THANKS TO THE BOSTON GLOBE, FIRST DATA CORPORATION AND SCHAEFER BREWERIES FOR THEIR CONTINUING SUPPORT AND TO FRIENDS OF THE REGATTA IN CAMBRIDGE AND THE GREATER BOSTON COMMUNITY WHO HAVE MADE THIS REGATTA POSSIBLE.

EACH SHELL IN THIS REGATTA WILL BE TIMED OVER THE RACE COURSE BY TWO DISTINCT AND SEPARATE TIMING SYSTEMS. THE PRIMARY SYSTEM ENTAILS THE TIMING (TO 1/10 OF A SECOND) BY COMPUTER TERMINALS LOCATED AT THE STARTING LINE AND AT THE FINISH LINE. THESE TERMINALS ARE CONNECTED TO A PDP-10 COMPUTER AT THE FIRST DATA CORPORATION IN WALTHAM, MASSACHUSETTS, WHERE THE RESULTS WILL BE COMPUTED ALMOST IMMEDIATELY.

ACCUSPLIT III PRECISION DIGITAL STOP WATCHES WILL RECORD THE STARTING AND FINISHING TIMES OF EACH SHELL. THE TIMES FROM THE COMPUTER WILL REMAIN UNOFFICIAL UNTIL THE REGATTA UMPIRES HAVE HAD AN OPPORTUNITY TO REPORT COURSE RULE VIOLATIONS AND INVOKE TIME PENALTIES, AND UNTIL ANY PROTESTS RECEIVED WITHIN 15 MINUTES AFTER THE END OF EACH RACE HAVE BEEN RESOLVED.

## ACKNOWLEDGEMENTS

BELMONT HILL SCHOOL  
BOSTON UNIVERSITY  
BOSTON GLOBE  
BUCKINGHAM-BROWNE  
AND NICHOLS SCHOOL  
CAMBRIDGE SEVEN ASSOCIATES INC.  
CLIMATE ENGINEERING  
FIRST DATA CORPORATION  
GNOMON COPY  
HARVARD UNIVERSITY  
INDUSTRIAL COMPUTATIONS INC.  
MASSACHUSETTS INSTITUTE OF TECHNOLOGY  
METROPOLITAN DISTRICT COMMISSION  
NORTHEASTERN UNIVERSITY  
SCHAEFER BREWERIES  
WEBSTER CONSTRUCTION CO INC  
WHITE STAG

## Events and Starting Times

- 1. Veteran Singles** 10:00am  
White Bow Markers with Blue Numbers
- 2. Women's Fours** 10:25am  
White Stag Trophy  
Blue Bow Markers with White Numbers
- 3. Double Sculls** 10:50am  
White Bow Markers with Red Numbers
- 4. Lightweight Eights** 11:10am  
Boston Herald American Trophy  
Yellow Bow Markers with Black Numbers
- 5. Elite Fours** 11:30am  
Schaefer Trophy  
White Bow Markers with Red Numbers
- 6. Novice Singles** 11:45am  
White Bow Markers with Blue Numbers
- 7. Intermediate Fours** 12:10pm  
Green Bow Markers with White Numbers
- 8. Women's Singles** 12:25pm  
Blue Bow Markers with White Numbers
- 9. Junior Eights** 12:55pm  
Red Bow Markers with Yellow Numbers
- 10. Intermed. Ltwt. Singles** 1:10pm  
Red Bow Markers with White Numbers
- 11. Pairs** 1:35pm  
White Bow Markers with Red Numbers
- 12. Intermediate Singles** 1:55pm  
Hawes Trophy  
Green Bow Markers with White Numbers
- 13. Intermediate Eights** 2:20pm  
Boston Mayor's Trophy  
Green Bow Markers with White Numbers
- 14. Elite Ltwt. Singles** 2:35pm  
Yellow Bow Markers with Black Numbers
- 15. Lightweight Fours** 3:00pm  
Metropolitan District Commission Trophy  
Yellow Bow Markers with Black Numbers
- 16. Women's Eights** 3:20pm  
Blue Bow Markers with White Numbers
- 17. Elite Singles** 3:35pm  
Curtis Trophy  
White Bow Markers with Red Numbers
- 18. Elite Eights** 4:00pm  
Boston Globe Challenge Trophy  
White Bow Markers with Red Numbers

## Regatta Committees

REGATTA DIRECTOR	JUDGES	COURSE	GRAPHICS
LAWRENCE G. COPLEY	EDWARD I. SINGER, FISA STARTEP	TED DU MOULIN CH	COORDINATOR: SHERRY PROCTOR
CHAIRMAN	EDGAR L. HOAG JR, FISA PATRICIA A. TYRA, NAAO PAT FERGUSON, NAAO ASSOCIATE	BILL BRACE GARY DU MOULIN BILL ROESNER TOM SHERWOOD SAM TALBOT	POSTER: BENNETT JONES PROGRAM: ANDY BARTHOLOMEW BARBARA GOODCHILD PHOTOS: DICK ABROMEIT BILL REIMANN JOHN WOLBARST
MARTHA GIBSON ROGERS			
REGATTA CHAIRMAN	UMPIRES	COMPUTER TIMING	DISTRIBUTION AND SALES
KEN LYNCH	DICK GROSSMAN CH ANN ROBBART CH	MARY P. MC SHANE CH	NANCY SMITH CH
TREASURER	BRUCE ANDREA ED BALDRIDGE ERNEST BAYER ERNESTINE BAYER MARIO CARUSO BILL CONWAY DOUG DAYTON JON GOULD KELLEN HAAK MATT HOBBS TIM JENKINS GENE LA BARRE TAM MAY JEFF MIOTKE LAWRENCE O'CONNELL VICTORIA PILLARD TODD SCANTLERBURY ARTHUR SMITHIES GLENN TINES MARTY VENEZKY KEN WINBER	CHARLES BAILYN HAROLD BARTH BILL HELMING STEVE JACKMAN RICK METZINGER LINDA ROTH	CAROL DAVIDSON JAY FERRITER MARTHA JEFFERIES JUDY FERGUSON DONALD HANSEN PAMELA HANSEN BARBARA O'CONNELL LORIE SARFATH PETER SLEPCHUK CHRISTOPHER SNOW HARRJET UDOFF JACK WINN
E. JETHRO SMITH JR		INFORMATION PROCESSING	PROMOTION
SECRETARY		PAUL GARBACZESKI CH	JERRY OLRICH CH
MOLLY UPTON		SUZANNE KNIGHT	ED BENNER ANNIE BRUCKNER CONNIE CLARKE DAN HEALEY GAIL PIERSON
ENTRIES		CHARLES F. ROTH III SPECIAL CONSULTANT	MAGAZINE BEACH MASTER
CHARLES/HEAD DATA ASSOCIATES		SUPPORTIVE SERVICES	BILL BECKLEAN CH CHUCK HILL BILL BRACE
REGISTRATION		L. ZEUS WADE CH JOHN C. ROGERS CH	REGATTA CHAIRMAN EMERITUS D'ARCY G. MAC MAHON
SENER FOURAKER CH	STOP WATCH TIMING	JOAN LANGERMAN JOHN A. DAVIDSON TIM JENKINS PETER A. RICHARDS JENNY GLENDENNING LAUREN SOMPAYRAC VIC MASLOV TOM MC CRACKEN	
SUSAN ANDERSON ROBERT COHEN ANN DAMSGAARD JON EDER JOSEPH EDER RUTH EDER BRYN EVENSEN KATIE MAC INTYRE FRAN OLRICH STEVE ROWE SUSAN SAMUELSON JANE SEARS SOPHIA SIECZKOWSKI SUZANNE SIEGERT HALLIE STEPHENSON VALERIE TALMAGE CORNELIA TIERNEY	LARRY CABOT CH	HOSPITALITY	
	JOHN ADKINS TIA ALLEN DAVID BANASH HARVEY EDLIN ED O'CONNELL BILL MATOUSEK TOM MC CRACKEN PETER RICHARDS JEAN SAURWEIN	HOLLY YASAITIS CH	
	COMMUNICATIONS	HARRY NORWEB HOPE OLMSTED	
WEIGH-IN	JOHN YASAITIS CH		
HENRY BAKER CH FRITS MANS VELT BECK VICTOR NEDZELNITSKY WARREN STRAUSS			

## Trophies

### Paul Revere Point Trophy Scoring System

After each event, points will be awarded to represented organizations for each finishing entry on the following basis:

$P(E+1-F)$  Key: P = points assigned to the event E = number of entries finishing the race F = finishing place of the entry  
ER R = finishing place of that entry relative to entries from same organization in that event

### Princeton Trophy

PRINCETON TROPHY IS AWARDED TO THE FASTEST CREW REPRESENTING A SECONDARY SCHOOL.

TROPHIES MAY BE WON BY INDIVIDUAL CLUBS, SCHOOLS AND COLLEGES. MIXED ENTRIES (REPRESENTING MORE THAN ONE ORGANIZATION) MAY WIN MEDALS ONLY.

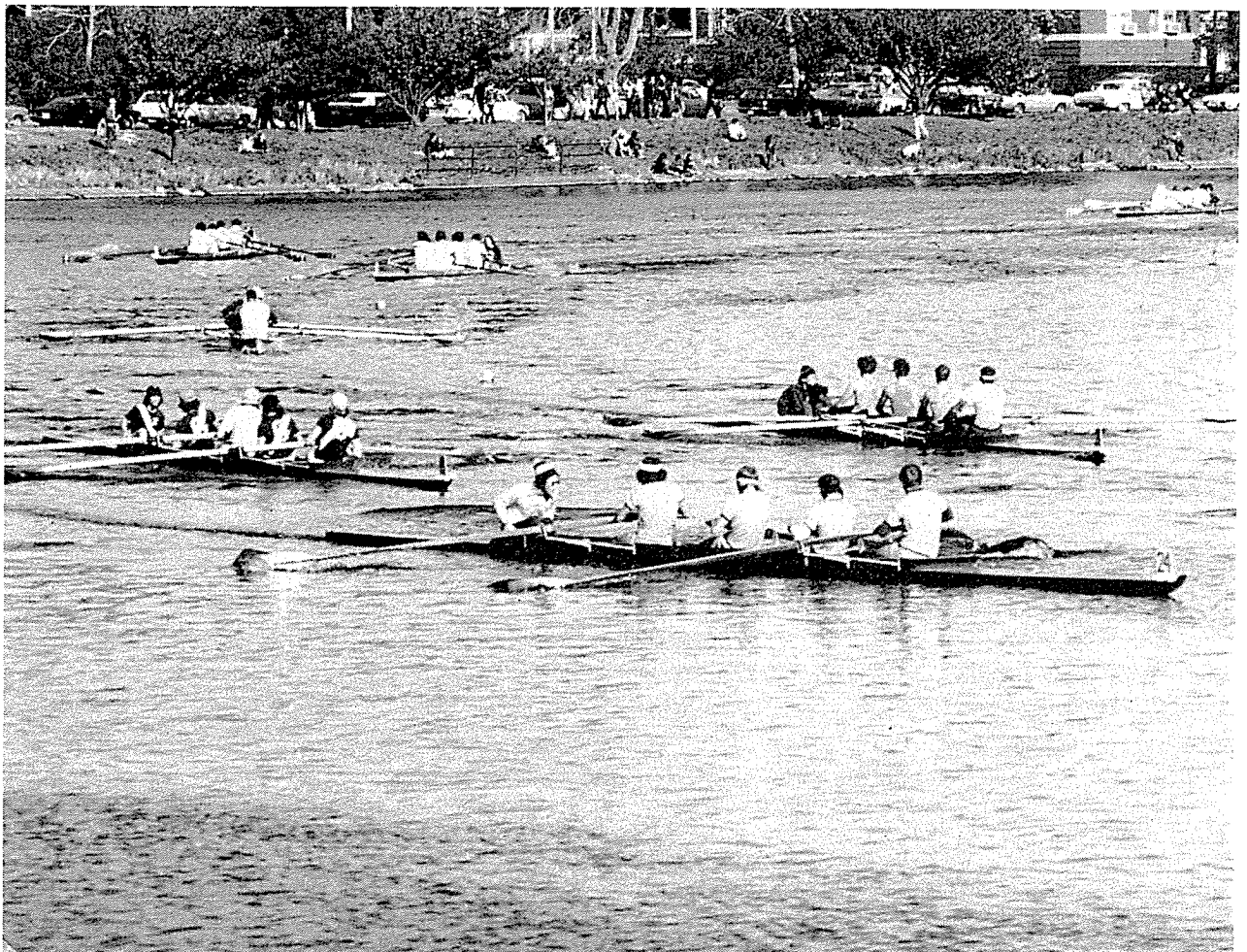
## Course Records

EVENT 1. 1971 J. OLRICH (AGE 59) CAMB. B.C. 18:26.7 20 POINTS	10. 1970 J. SHEFITZ, M.I.T. B.C. 19:25.1 25 POINTS
2. 1974 RADCLIFFE COLLEGE 20:34.8 40 POINTS	11. 1971 R. MILLEP, UNION B.C. 19:08.3 25 POINTS
3. 1972 N. Y. A. C. 17:04.3 40 POINTS	12. 1971 WINTHROP HSE / 1972 COAST GUARD 15:48.1 50 POINTS
4. 1972 POTOHAC B.C. 15:32.7 80 POINTS	13. 1971 L. KLECATSKY, N.Y.A.C. 18:39.8 35 POINTS
5. 1971 UNION / HARVARD 16:28.3 50 POINTS	14. 1971 UNION B.C. 18:08.0 40 POINTS
6. 1970 D. JONES, CAMB. B.C. 19:49.4 15 POINTS	15. 1971 VESPER B.C. 17:03.3 50 POINTS
7. 1971 DARTMOUTH R.C. 17:19.3 35 POINTS	16. 1972 VESPER B.C. 18:24.1 80 POINTS
8. 1971 G. PIERSON, CAMB. B.C. 21:51.3 30 POINTS	17. 1971 J. DIETZ, N. Y. A. C. 17:54.2 35 POINTS
9. 1971 FATHER JUDGE H.S. 15:46.7 40 POINTS	18. 1971 UNION BOAT CLUB 14:53.4 80 POINTS



## Competing Clubs, Schools and Colleges

ALDEN OCEAN SHELL ASSOC.	KENT SCHOOL BOAT CLUB	RIVERSIDE BOAT CLUB
AMHERST COLLEGE R.A.	KIRKLAND HOUSE	RUTGERS UNIV.
ARGONAUT ROWING CLUB	L.T.I. ROWING CLUB	S. I. R. A.
BACHELORS BARGE CLUB	LAVAL K. C.	SAGAMORE ROWING ASSOC.
BACK BAY VIKING R.A.	LINCOLN PARK BOAT CLUB	SAYBROOK COLLEGE P. C.
BARNARD COLLEGE	M.I.T. BOAT CLUB	SCHUYLKILL B. C.
BELMONT ROWING ASSOC. CLUB	MALTA BOAT CLUB	SHIMMO ROWING CLUB
BLOOD STREET SCULLS	MARIETTA COLLEGE R. A.	STMSBURY H. S. CRFW
BOSTON UNIVERSITY	MARIST COLLEGE	SMITH COLLEGE CREW
BOUCHERVILLE ROWING CLUB	MASSACHUSETTS, U. OF, WOMEN'S CREW CLUB	SPUYTEN DUYVIL R. C.
BROOKS SCHOOL CREW	MASSACHUSETTS, U. OF, R. A.	ST. CATHARINES ROWING CLUB
BROWN UNIVERSITY	MIDDLETOWN ROWING CLUB	ST. JOHN'S UNIV. CREW CLUB
BUCKINGHAM BROWNE AND NICHOLS	MINNESOTA B. C.	ST. JOHNS H. S.
CALIFORNIA, U. OF.	MINNESOTA U. CREW	SYRACUSE ALUMNI R. A.
CAMBRIDGE BOAT CLUB	MIXED ENTRY	SYRACUSE CHANGERS CLUB
CHARLES RIVER R.A.	MOSES BROWN SCHOOL	SYRACUSE UNIV. WOMEN'S CREW
CHOATE SCHOOL	NARRAGANSETT R. C.	TABOR ACADEMY R. A.
CLARK UNIVERSITY	NEBRASKA, U. OF, CREW	TAMPA, U. OF, WOMEN'S CREW
COLLEGE B.C. OF PENNSYLVANIA	NEBRASKA, U. OF, WOMEN'S CREW	TAMPA, UNIV. OF
COLUMBIA UNIVERSITY	NEW HAMPSHIRE, U. OF	TRINITY COLLEGE
CONNECTICUT COLLEGE R.A.	NEW HAMPSHIRE, U. OF, WOMEN'S CREW	U. S. COAST GUARD ACAD.
CORNELL UNIVERSITY CREW	NEW HAVEN ROWING CLUB	U. S. MERCHANT MARINE ACAD.
CORNELL WOMEN'S CREW	NEW YORK ATHLETIC CLUB	U. S. NAVAL ACADEMY
DARTMOUTH ROWING CLUB	NEW YORK ROWING ASSOC.	UNDINE BARGE CLUB
DETROIT BOAT CLUB	NIAGARA LIST, S. S.	UNION BOAT CLUB
DREXEL UNIVERSITY CREW	NOBLE & GREENOUGH SCHOOL	UNIVERSITY BARGE CLUB
DUKE CREW	NONFUSCH OAR & PADDLE CLUB	UPPER CANADA COLLEGE
EASTERN DEVELOPMENT CAMP	NORTHEASTERN UNIVERSITY	VESPER B. C.
ECORSE BOAT CLUB	NORTHFIELD MT. HERMON SCHOOL	VIRGINIA, U. OF, R. A.
EQUIPE DU QUEBEC CLUB D'AVIRON	NOTRE DAME R. C.	VIRGINIA, U. OF, WOMEN'S R. A.
FAIRMONT R. A.	OLD DOMINION R. C.	WASHINGTON COLLEGE C. C.
FATHER JUDGE H. S.	OTTAWA ROWING CLUB	WASHINGTON STATE R. C.
FLORIDA ATHLETIC CLUB	OYSTER BAY R. A.	WELLESLEY COLLEGE CREW
FLORIDA INST. OF TECH.	PFNN A. C. ROWING ASSOC.	WESLEYAN UNIV. CREW CLUB
FORDHAM R. A.	PENNSYLVANIA, U. OF, WOMEN'S CREW	WEST PARK S. S.
GEORGE WASHINGTON U. WOMEN'S CREW	PHILADELPHIA GIRLS R. C.	WEST SIDE R. C.
GEORGETOWN UNIVERSITY R. A.	PHILLIPS ACADEMY	WESTERN ONTARIO, U. OF, R. C.
GUNNERY SCHOOL	PHILLIPS EXETER ACADEMY	WILLIAMS COLLEGE B. C.
HARTFORD BARGE CLUB	POTOMAC BOAT CLUB	WINSOR SCHOOL
HARVARD BUSINESS SCHOOL B. C.	PRINCETON UNIV. R. A.	WISCONSIN, U. OF, CREW
HARVARD UNIVERSITY	PRINCETON U. WOMEN'S CREW	WORCESTER POLYTECH. R. A.
HILLSBOROUGH ROWING CLUB	RADCLIFFE COLLEGE CREW	WORCESTER STATE COLLEGE
HOLY CROSS COLLEGE	REMEX ROWING CLUB	YALE U. WOMEN'S VARSITY CREW
ITHACA COLLEGE	RHODE ISLAND, U. OF, R. A.	YALE UNIVERSITY
JACKSONVILLE U. CREW	RIDLEY BOAT CLUB	



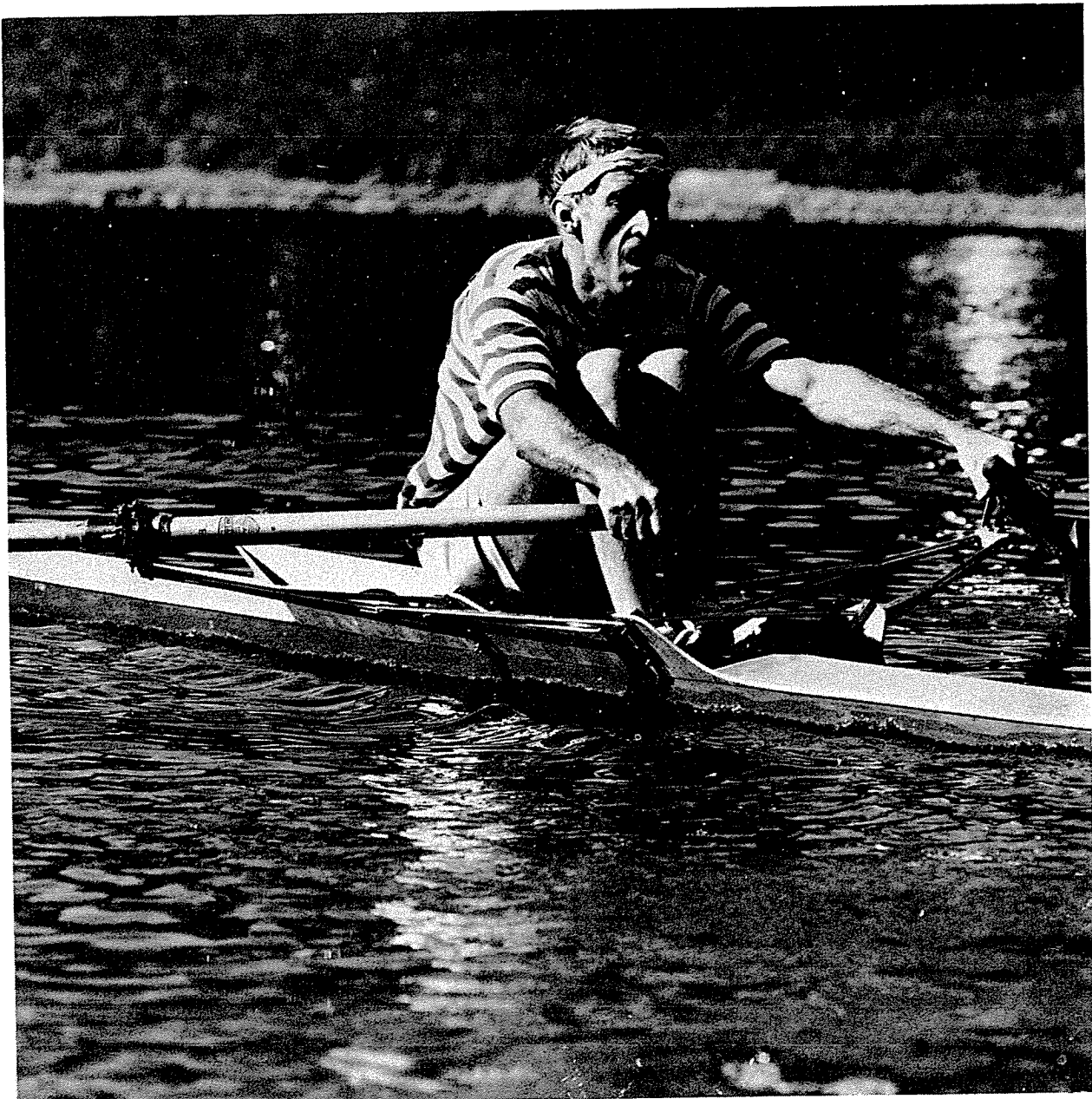
UNIVERSITY OF MINNESOTA LEADS THE PACK

# 1. Veteran Singles

White Bow Markers with Blue Numbers

AN 8 SECOND HANDICAP IS GRANTED FOR EACH YEAR (AT NEAREST BIRTHDAY) OVER AGE 40

1. J. OBRICH ( AGE 63 ) CAMBRIDGE BOAT CLUB	15. V. MASLOV ( AGE 44 ) CAMBRIDGE BOAT CLUB	29. R. ISAACS ( AGE 64 ) CAMBRIDGE BOAT CLUB
2. E. LYNCH ( AGE 51 ) CAMBRIDGE BOAT CLUB	16. A. PAPPENHEIMER JR. ( AGE 67 ) CAMBRIDGE BOAT CLUB	30. R. LEVY ( AGE 42 ) MONESUCH OAR & PADDLE CLUB
3. J. WELCHLI ( AGE 47 ) DETROIT BOAT CLUB	17. B. SYLVESTER ( AGE 51 ) CHOATE SCHOOL	31. R. BEEBE ( AGE 64 ) GUNNERY SCHOOL
4. R. CUTLER ( AGE 62 ) RIVERSIDE BOAT CLUB	18. N. GRAF ( AGE 50 ) TRINITY COLLEGE	32. N. TILNEY ( AGE 40 ) UNION BOAT CLUB
5. D. CHALLINOR ( AGE 55 ) POTOMAC BOAT CLUB	19. T. DONOHUE ( AGE 49 ) S. I. R. A.	33. J. LYNCH ( AGE 42 ) NEW YORK ATHLETIC CLUB
6. G. IGNAS ( AGE 42 ) VESPER B. C.	20. T. CROSBY ( AGE 75 ) UNION BOAT CLUB	34. F. PLIMPTON ( AGE 48 ) NARRAGANSETT B. C.
7. R. EMMET JR. ( AGE 51 ) BUCKINGHAM BROWNE AND NICHOLS	21. P. SPRAGUE ( AGE 50 ) MONESUCH OAR & PADDLE CLUB	35. T. COLGAN ( AGE 48 ) VESPER B. C.
8. S. PROCTOR ( AGE 50 ) CAMBRIDGE BOAT CLUB	22. T. HICKEY ( AGE 43 ) UNION BOAT CLUB	36. H. ROGERS, JR. ( AGE 49 ) M.I.T. BOAT CLUB
9. L. WADE ( AGE 71 ) CAMBRIDGE BOAT CLUB	23. T. CLEAVER ( AGE 42 ) UNIVERSITY BARGE CLUB	37. E. GOOD, JR. ( AGE 53 ) CORNFELL UNIVERSITY CREW
10. R. LEA JR. ( AGE 62 ) UNIVERSITY BARGE CLUB	24. P. HELLER ( AGE 49 ) SHINMO ROWING CLUB	38. E. THOMAS ( AGE 56 ) UNIVERSITY BARGE CLUB
11. H. ZINK ( AGE 57 ) PRINCETON UNIV. R. A.	25. H. KEYES ( AGE 71 ) UNION BOAT CLUB	39. J. OLDHAM ( AGE 63 ) NARRAGANSETT B. C.
12. C. DU MOULIN ( AGE 57 ) CAMBRIDGE BOAT CLUB	26. G. NINOS ( AGE 46 ) SYRACUSE CHARGERS CLUB	40. E. WITTE ( AGE 80 ) CAMBRIDGE BOAT CLUB
13. H. BARTLETT ( AGE 47 ) NARRAGANSETT B. C.	27. J. CONNORS ( AGE 47 ) UNION BOAT CLUB	
14. D. MARTIN ( AGE 44 ) UNION BOAT CLUB	28. H. JANS ( AGE 50 ) CAMBRIDGE BOAT CLUB	



VETERAN D. CHAI-INGOR, POTOMAC BOAT CLUB, WASHINGTON D.C.



## 2. Women's Fours

10:25am

White Stag Trophy  
Blue Bow Markers with White Numbers

- |   |   |  |   |
|---|---|--|---|
| 1. RADCLIFFE COLLEGE CREW<br>BOW A. ROBINSON<br>2 G. RASMUSSEN<br>3 A. HALL<br>STR D. HICKMAN<br>COX M. HADLEY        | 11. WILLIAMS COLLEGE B. C.<br>BOW *. HODGSON<br>2 *. APTHORP<br>3 *. WATSON<br>STR *. LEOUS<br>COX *. HALPERIN                | 21. HARVARD BUSINESS SCHOOL B. C. 31. WINSOR SCHOOL<br>BOW M. BASKIN<br>2 E. BRUSHWOOD<br>3 N. HAWTHORNE<br>STR C. ANDERSON<br>COX C. WOOD | 32. WINSOR SCHOOL<br>BOW M. SWETZOFF<br>2 C. LOWE<br>3 L. ATKMAN<br>STR J. ATKMAN<br>COX J. BUSHIN                |
| 2. YALE U. WOMEN'S VARSITY CREW<br>BOW F. KIESLING<br>2 L. BAKER<br>3 C. ERNST<br>STR A. WARNER<br>COX F. SHIROMA     | 12. BOSTON UNIVERSITY<br>BOW G. GARRET<br>2 J. FRIEDMAN<br>3 R. HOCHBERG<br>STR S. VASSIERE<br>COX M. WHITE                   | 22. NEBRASKA, U. OF, WOMEN'S CREW<br>BOW A. HAINS<br>2 C. COONS<br>3 S. LANDENBERGER<br>STR L. ROHOE<br>COX D. VISTY                       | 33. LINCOLN PARK BOAT CLUB<br>BOW S. ROBERTSON<br>2 L. MOSES<br>3 C. BERGE<br>STR R. HORNING<br>COX N. COHEN      |
| 3. NEW HAMPSHIRE, WOMEN'S CREW<br>BOW F. CRANE<br>2 C. FUERST<br>3 B. HILLS<br>STR L. HILLS<br>COX S. GALLAGHER       | 13. WISCONSIN, U. OF, CREW<br>BOW D. W. HARRINGTON<br>2 R. SCHNEFER<br>3 K. GALLES<br>STR C. MILNER<br>COX M. SCHUETTE        | 23. NORTHFIELD MT. HERMON SCHOOL<br>BOW E. TUCKER<br>2 W. SEVERIGHAUS<br>3 E. CLARKE<br>STR K. LAMPHEAR<br>COX J. KAPLAN                   | 34. M.I.T. BOAT CLUB<br>BOW M. GRENNBERG<br>2 F. PLASSE<br>3 K. WOOTON<br>STR R. HERBERT<br>COX L. YAMADA         |
| 4. RADCLIFFE COLLEGE CREW<br>BOW K. OBERHAUSER<br>2 N. HERMAN<br>3 P. COLSON<br>STR J. MACKS<br>COX A. SACHS          | 14. COLLEGE B. C. OF PENNSYLVANIA<br>BOW C. HAMLIN<br>2 G. RICKETSON<br>3 A. FINKELSTEIN<br>STR M. ARONSON<br>COX B. HOROWITZ | 24. DUKE CREW<br>BOW A. SCHATZ<br>2 M. BOWLAND<br>3 B. BLOUNT<br>STR D. DUUS<br>COX D. HOFFMAN   | 34. SAGAMORE ROWING ASSOC.<br>BOW R. TULLY<br>2 P. SMITH<br>3 F. BOTTO<br>STR M. BOYCE<br>COX B. LEACH            |
| 5. TAMPA, U. OF, WOMEN'S CREW<br>BOW M. GORDON<br>2 D. McDONALD<br>3 B. BRANDELL<br>STR L. EVENSON<br>COX M. BRADLEY  | 15. PRINCETON U. WOMEN'S CREW<br>BOW H. GREEN<br>2 C. CARSTENS<br>3 L. FAN<br>STR M. SOUTHERLAND<br>COX M. KELLOGG            | 25. SYRACUSE UNIV. WOMEN'S CREW<br>BOW J. KNAPP<br>2 B. LIVINGSTON<br>3 A. SNYDER<br>STR A. FURBEK<br>COX P. PELA                          | 35. WORCESTER POLYTECH. R. A.<br>BOW M. DONOVAN<br>2 R. POULIN<br>3 T. TUTTLE<br>STR A. MADARA<br>COX F. KING     |
| 6. CONNECTICUT COLLEGE R. A.<br>BOW G. BIDDLE<br>2 L. THOMAS<br>3 C. SOBIN<br>STR M. MCLAUGHLIN<br>COX C. KIACHIF     | 16. DARTMOUTH ROWING CLUB<br>BOW K. SPRAGUE<br>2 R. CASSIDY<br>3 K. SCHOFFELD<br>STR A. WILDER<br>COX H. SCHWARTZ             | 26. GEORGE WASH U. WOMEN'S CREW<br>BOW J. HOFFMAN<br>2 J. SCHAEFER<br>3 L. CAIN<br>STR P. WILKINSON<br>COX L. LAUGHTER                     | 36. WINSOR SCHOOL<br>BOW J. WHITCOMB<br>2 C. BENNETT<br>3 L. GRINDLE<br>STR J. WELLS<br>COX B. GROSS              |
| 7. M.I.T. BOAT CLUB<br>BOW W. IRVING<br>2 V. POTTER<br>3 C. COLE<br>STR I. KLAAS<br>COX S. TONG                       | 17. PRINCETON U. WOMEN'S CREW<br>BOW E. DESANCTIS<br>2 K. HUISMAN<br>3 J. YOUNGHOLM<br>STR C. BROWN<br>COX M. KELLOGG         | 27. PHILADELPHIA GIRLS R. C.<br>BOW M. ALBANI<br>2 S. TAYLOR<br>3 M. FLYNN<br>STR B. FLYNN<br>COX D. GILBERG                               | 37. WELLESLEY COLLEGE CREW<br>BOW M. ROUNDS<br>2 P. MUNTZ<br>3 K. COOKE<br>STR K. LUKINS<br>COX P. CHOW           |
| 8. WELLESLEY COLLEGE CREW<br>BOW B. ALEXANDER<br>2 D. MACLASKEY<br>3 P. O'NEAL<br>STR H. FREMONT<br>COX M. STEPHENSON | 18. BOSTON UNIVERSITY<br>BOW C. SNOW<br>2 S. KANTER<br>3 P. JENNINGS<br>STR M. HART<br>COX J. HARDING                         | 28. PRINCETON U. WOMEN'S CREW<br>BOW B. FRANKS<br>2 M. KEAT<br>3 E. DESANCTIS<br>STR S. RUTH<br>COX M. KELLOGG                             | 29. BARNARD COLLEGE<br>BOW B. PENDERGAST<br>2 L. DITULLIO<br>3 J. RICHARDS<br>STR K. KIDWELL<br>COX M. WESTHEIMER |
| 9. MINNESOTA U. CREW<br>BOW J. DOUGHERTY<br>2 L. MAGNEY<br>3 G. MADSON<br>STR S. SCHNEIDERMAN<br>COX J. RODEND        | 19. MINNESOTA U. CREW<br>BOW V. GORDON<br>2 M. BAER<br>3 N. BRENNECKE<br>STR M. WEINANDT<br>COX M. GARDNER                    | 30. NORTHFIELD MT. HERMON SCHOOL<br>BOW A. GLADSTONE<br>2 H. DOWNS<br>3 S. WILLIAMS<br>STR F. LOMBARD<br>COX L. COTTON                     |   |
| 10. SMITH COLLEGE CREW<br>BOW M. BAINTON<br>2 A. DREIZLER<br>3 M. GIDDINGS<br>STR K. BJORHUS<br>COX D. HOLMES         | 20. WILLIAMS COLLEGE B. C.<br>BOW *. GREGORY<br>2 *. AULENBACH<br>3 *. CHRISTOPH<br>STR *. MARRACK<br>COX *. HAKALA           |  |   |

## 3. Double Sculls

10:50am

White Bow Markers with Red Numbers

- |   |  |   |   |
|---|--|---|---|
| 1. NEW YORK ATHLETIC CLUB<br>BOW L. KLECATSKY<br>STR J. DIETZ       | 11. RIVERSIDE BOAT CLUB<br>BOW B. BANE<br>STR S. BANE                        | 21. ARGONAUT ROWING CLUB<br>BOW D. BURGON<br>STR J. BURGON            | 31. MASSACHUSETTS, U. OF, R. A.<br>BOW R. SPOUSTA<br>STR D. SEUSS |
| 2. NEW YORK ATHLETIC CLUB<br>BOW M. GOOD<br>STR E. GOOD             | 12. L.T.I. ROWING CLUB<br>BOW S. J. HANNIGAN<br>STR M. J. BRITT              | 22. ECORSE BOAT CLUB<br>BOW D. SITEK<br>STR R. SITEK                  | 32. UNIVERSITY BARGE CLUB<br>BOW J. PETRIE<br>STR M. E. HOGUE     |
| 3. MALTA BOAT CLUB<br>BOW R. STEHLIK<br>STR F. DULING               | 13. M.I.T. BOAT CLUB<br>BOW M. K. LOMBARDI<br>STR H. ROGERS JR.              | 23. MINNESOTA R. C.<br>BOW S. TAKAICHI<br>STR D. KLECATSKY            | 33. MIXED ENTRY<br>BOW P. BERG<br>STR T. SANTORO                  |
| 4. POTOMAC BOAT CLUB<br>BOW T. C. CHISNELL II<br>STR L. STEWART III | 14. SAGAMORE ROWING ASSOC.<br>BOW T. PETRONE<br>STR B. SNEEDEN               | 24. CAMBRIDGE BOAT CLUB<br>BOW J. T. BARRETT JR.<br>STR W. S. BARRETT | 34. NEW HAMPSHIRE, U. OF<br>BOW P. RICHARDSON<br>STR J. BOGART    |
| 5. UNDINE BARGE CLUB<br>BOW E. D'ALBA<br>STR J. RASLAVSKY           | 15. RIVERSIDE BOAT CLUB<br>BOW S. CROWWELL<br>STR T. VAN DUSEN               | 25. PRINCETON UNIV. R. A.<br>BOW F. SIMONSON<br>STR D. MARSH          | 35. RIVERSIDE BOAT CLUB<br>BOW R. KELLEY<br>STR N. SIMIONE        |
| 6. CAMBRIDGE BOAT CLUB<br>BOW B. JONES<br>STR P. WILSON             | 16. HARVARD UNIVERSITY<br>BOW *. HIGGINSON<br>STR *. MITCHELL                | 26. COLLEGE B. C. OF PENNSYLVANIA<br>BOW M. MACLEAN<br>STR S. DUGAN   | 36. WORCESTER POLYTECH. R. A.<br>BOW S. CHASE<br>STR C. FALLON    |
| 7. ARGONAUT ROWING CLUB<br>BOW P. RANEY<br>STR T. SKRIEN            | 17. VESPER B. C.<br>BOW J. BANMAN<br>STR A. POST                             | 27. NARRAGANSETT B. C.<br>BOW J. WILHELM<br>STR S. VAIL               | 37. CHOATE SCHOOL<br>BOW T. BACKES<br>STR E. KLAMAN               |
| 8. UNION BOAT CLUB<br>BOW T. PHILIPPI<br>STR A. TOWNSEND            | 18. MIXED ENTRY<br>BOW P. RAYMOND<br>STR L. WATSON                           | 28. OYSTER BAY R. A.<br>BOW J. JOHNSON<br>STR R. BRADLEE              | 38. MIXED ENTRY<br>BOW J. FERGUSON<br>STR G. WHITELAW             |
| 9. PRINCETON UNIV. R. A.<br>BOW A. WASHBURN<br>STR P. WASHBURN      | 19. M.I.T. BOAT CLUB<br>BOW P. BEAMAN<br>STR C. CHRISTENSEN                  | 29. RIVERSIDE BOAT CLUB<br>BOW P. HESTER<br>STR D. MCGALE             |   |
| 10. PRINCETON UNIV. R. A.<br>BOW S. SWERIDUK<br>STR J. RUTHERFORD   | 20. SPUYTEN DUYVIL R. C.<br>BOW R. H. LIVINGSTON<br>STR H. H. LIVINGSTON JR. | 30. HARVARD UNIVERSITY<br>BOW T. HACKERT<br>STR P. HUNTSMAN           |   |

# 4. Lightweight Eights

11:10am

Boston Herald American Trophy

Yellow Bow Markers with Black Numbers

- |   |  |   |  |
|---|--|---|--|
| 1. HARVARD UNIVERSITY<br>ROW * MILLER<br>2 * STEBER<br>3 * KIGER<br>4 * KUSCHNER<br>5 * CHAPMAN<br>6 * WELCH<br>7 * LEANEY<br>STR * REYNOLDS<br>COX * LEVITCH                           | 11. TRINITY COLLEGE<br>ROW M. O'BRIEN<br>2 S. STUECK<br>3 P. HARRIS<br>4 S. KEAR<br>5 P. CEDARBAUM<br>6 J. BOLSTER<br>7 J. COWDERY<br>STR G. BOOTH<br>COX W. MATTHEWS                    | 21. YALE UNIVERSITY<br>ROW R. PETERFREUND<br>2 P. FREEMAN<br>3 J. MORRISON<br>4 J. NEAL<br>5 D. GREEBE<br>6 C. PHINNEY<br>7 R. KAHN<br>STR D. KILPATRICK<br>COX D. CHAM               | 31. U. S. COAST GUARD ACAD.<br>ROW M. CAPPELLO<br>2 B. FRY<br>3 L. SMITH<br>4 G. ROLSON<br>5 E. O'DONNELL<br>6 H. DENNIS<br>7 M. CARR<br>STR J. ACTON<br>COX D. BARTLETT                 |
| 2. RUTGERS UNIV.<br>ROW T. WHINFREY<br>2 A. DI NATALE<br>3 J. PARKS<br>4 A. MAYER<br>5 O. UNSOELD<br>6 R. BLOCK<br>7 S. HAHNER<br>STR M. STEINHARDT<br>COX B. HOGAN                     | 12. COLUMBIA UNIVERSITY<br>ROW M. PORTER<br>2 H. GIUSTI<br>3 L. DYER<br>4 M. STRANSKY<br>5 E. BERCLER<br>6 S. ZADES<br>7 H. HARRISON<br>STR J. COTTER<br>COX J. FIESCHER                 | 22. RUTGERS UNIV.<br>ROW T. CARROLL<br>2 H. CAPRASCIO<br>3 L. MILLER<br>4 S. RIVKES<br>5 J. KAMINSKY<br>6 J. LIPOVSKY<br>7 S. MAMBER<br>STR W. GOODWIN<br>COX L. SPRARIE              | 32. WESLEYAN UNIV. CREW CLUB<br>ROW E. LICHTLING<br>2 M. DONNELLA<br>3 S. WINNETT<br>4 J. CLEWORTH<br>5 M. STEWART<br>6 J. SHAW<br>7 J. WHUTERS<br>STR B. REYNOLDS<br>COX P. BOISON      |
| 3. M.I.T. BOAT CLUB<br>ROW M. NFFF<br>2 D. WEIDERSPAHN<br>3 G. EUDENS<br>4 R. GRANETZ<br>5 B. SWEAT<br>6 J. CLARKE<br>7 J. OCAMPO<br>STR B. BRISBIN<br>COX D. LEE                       | 13. HARVARD UNIVERSITY<br>ROW * ZECHIBE<br>2 * KUBICER<br>3 * FUDENBERG<br>4 * POTTER<br>5 * CALKINS<br>6 * KING<br>7 * BROOKS<br>STR * CUNNINGHAM<br>COX * CORDEIRO                     | 23. TRINITY COLLEGE<br>ROW R. BACYZK<br>2 M. HAWKINS<br>3 W. ROGERS<br>4 R. DOBROWSKI<br>5 C. COHN<br>6 D. LOGAN<br>7 J. DOOLITTLE<br>STR W. HAYWARD<br>COX C. LAPORTE                | 33. NEW HAMPSHIRE, U. OF<br>ROW C. LANC<br>2 K. ROSS<br>3 M. LINENRURGER<br>4 B. MCDEVITT<br>5 S. GOODSROW<br>6 R. MENEAR<br>7 J. MARSHALL<br>STR D. LTBREY<br>COX I. BUSALACCHI         |
| 4. FLORIDA INST. OF TECH.<br>ROW B. REYNOLDS<br>2 B. IHLE<br>3 D. CHAFFEE<br>4 B. STICKLER<br>5 M. MCNUTT<br>6 J. SHEPPARD<br>7 D. ENGLER<br>STR T. DELUNA<br>COX B. WALACHECO          | 14. RHODE ISLAND, U. OF, R. A.<br>ROW B. REILLY<br>2 C. WOODARD<br>3 C. SADLEY<br>4 B. GILLETTE<br>5 B. TABER<br>6 M. BECKENBACH<br>7 R. ROBERTSON<br>STR T. ROBERTSON<br>COX C. CULSHAW | 24. DARTMOUTH ROWING CLUB<br>ROW D. RIKLEEN<br>2 T. FOSTER<br>3 G. BULLERJAHN<br>4 J. HAYSEN<br>5 D. JACKSON<br>6 D. LOMIS<br>7 R. BRADFORD<br>STR D. HOSSNANN<br>COX C. NAGLE        | 34. DREXEL UNIVERSITY CREW<br>ROW P. MCANULIFFE<br>2 R. OKUPNIAK<br>3 D. FRANK<br>4 T. MONTGOMERY<br>5 P. PETTIT<br>6 R. CROW<br>7 W. LUISA<br>STR B. MCCAULEY<br>COX L. WALKER          |
| 5. COLLEGE B.C. OF PENNSYLVANIA<br>ROW D. MCCLARKIN<br>2 J. KAROZINGB<br>3 T. CORNPERNOLLE<br>4 B. WILSON<br>5 M. DAVIDSON<br>6 D. FARWELL<br>7 S. LAMAR<br>STR B. KEANE<br>COX K. COOK | 15. PRINCETON UNIV. R. A.<br>ROW B. WOLL<br>2 G. SNYDERS<br>3 P. ANCOITZ<br>4 W. SWIGART<br>5 J. BEHNKE<br>6 J. ANSTROM<br>7 M. KALUS<br>STR R. WILSON<br>COX R. LEVINSON                | 25. CORNELL UNIVERSITY CREW<br>ROW R. CHUCHLA<br>2 J. JENSEN<br>3 B. FORMAN<br>4 D. BRUNNER<br>5 G. GLEIM<br>6 J. YOST<br>7 C. YARWORTH<br>STR D. KISSOCK<br>COX J. KANGOS            | 35. FORDHAM R. A.<br>ROW F. BADLER<br>2 J. YORF<br>3 S. GUTLEBER<br>4 L. POWER<br>5 F. STRAUCH<br>6 B. MCCAULEY<br>7 R. ALBERT<br>STR E. PRIESTON<br>COX D. CASPETTI                     |
| 6. HARVARD UNIVERSITY<br>ROW * RUBIN<br>2 * UNGER<br>3 * LOWRY<br>4 * BEHRMAN<br>5 * JACKSON<br>6 * CRANSTON<br>7 * SAMPLER<br>STR * MAHER<br>COX * HOKE                                | 16. WILLIAMS COLLEGE B. C.<br>ROW * WATKINS<br>2 * GUNTHER<br>3 * MORRIS<br>4 * FOX<br>5 * STEVENSON<br>6 * STARLER<br>7 * HOLMES<br>STR * WATSON<br>COX * SISSON                        | 26. U. S. COAST GUARD ACAD.<br>ROW B. PROBERT<br>2 D. CONNER<br>3 T. HAELEIN<br>4 R. MAKI<br>5 R. TUXHORN<br>6 B. HOEY<br>7 B. MORRISON<br>STR T. WENZEL<br>COX D. LEVFSQUE           | 36. CONNECTICUT COLLEGE R. A.<br>ROW M. LAMMERT<br>2 F. JARRET<br>3 B. GOLPMA<br>4 J. CHIMONRES<br>5 J. BATCHELDER<br>6 J. CLARKSON<br>7 G. HULME<br>STR P. CLAIRSON<br>COX D. ROSENTHAL |
| 7. U. S. NAVAL ACADEMY<br>ROW P. SCHLAEPFER<br>2 J. GREEN<br>3 T. HAGEN<br>4 S. NIMITZ<br>5 K. WEAVER<br>6 T. COOK<br>7 L. MERMINGER<br>STR P. KUMPIE<br>COX P. ELLIS                   | 17. MARIST COLLEGE<br>ROW J. BOYLE<br>2 B. RISKS<br>3 J. PATALUCCI<br>4 D. GUALTIERI<br>5 A. CURRAN<br>6 J. DAVERIN<br>7 K. HOON<br>STR P. BROWN<br>COX M. DAVERN                        | 27. DETROIT BOAT CLUB<br>ROW D. REDMOND<br>2 D. OSGOOD<br>3 B. COYLE<br>4 R. JAMARA<br>5 C. ROSSITER<br>6 B. SWEENEY<br>7 P. UHL<br>STR D. BRENNAN<br>COX S. MILLER                   | 37. HOLY CROSS COLLEGE<br>ROW J. WEIS<br>2 D. STAHLSKI<br>3 M. CROSSIN<br>4 E. MCLAUGHLIN<br>5 T. DENNIS<br>6 B. HANNIGAN<br>7 S. RYAN<br>STR M. LOZFAU<br>COX M. TRACY                  |
| 8. PRINCETON UNIV. R. A.<br>ROW D. FRYER<br>2 T. HENRY<br>3 T. WELLS<br>4 C. ROULON-MILLER<br>5 J. HAYES<br>6 J. STOECKINIUS<br>7 W. COLSON<br>STR J. SCHREPPLEP<br>COX D. KING         | 18. ITHACA COLLEGE<br>ROW R. ROSENTHAL<br>2 C. DEHM<br>3 B. SMYTHE<br>4 P. SCHULTZ<br>5 L. SAVOYE<br>6 D. SALTZGABER<br>7 J. ROMAIN<br>STR P. HAINES<br>COX E. WILSON                    | 28. POTOMAC BOAT CLUB<br>ROW M. DEBETTENCOURT<br>2 J. BAKER<br>3 M. COLESON<br>4 J. GREEN<br>5 A. KLEINDIENST<br>6 D. RANSMEIER<br>7 H. HFRFINDAHL<br>STR J. BUTLER<br>COX J. MILLION | 38. WILLIAMS COLLEGE B. C.<br>ROW * CONANT<br>2 * MOLLKAD<br>3 * WARDWELL<br>4 * ASHBY<br>5 * PFENDERGAST<br>6 * GARDNER<br>7 * GRESHAM<br>STR * JOHANSON<br>COX * AGOSTINO              |
| 9. YALE UNIVERSITY<br>ROW D. SMITH<br>2 M. SHEPPARD<br>3 A. ROSENBERG<br>4 P. MARTIN<br>5 J. PAWLOWSKI<br>6 S. LANDEFELD<br>7 D. COOPER<br>STR D. WHACK<br>COX H. WILLIAMS              | 19. COLLEGE B.C. OF PENN<br>ROW C. SCHULTZ<br>2 T. STEFFENS<br>3 D. KREISER<br>4 P. MARKOWSKI<br>5 F. HOFFMAN<br>6 J. JORDON<br>7 D. HENRIQUES<br>STR B. KONOPKA<br>COX D. CUCHRAN       | 29. CORNELL UNIVERSITY CREW<br>ROW C. LANDERL<br>2 S. DICKENS<br>3 S. MACDONALD<br>4 J. MORGAN<br>5 A. LAINE<br>6 J. PAUL<br>7 R. GARLAN<br>STR D. DOWNEY<br>COX L. PANG              | 39. MASSACHUSETTS, U. WOMEN *S<br>ROW H. DAVIS<br>2 S. FERGUSON<br>3 L. SCHWALM<br>4 L. ANGUS<br>5 K. LEONARD<br>6 L. JOHNSON<br>7 K. KIRKHAM<br>STR L. LOUE<br>COX C. BURKE             |
| 10. PRINCETON UNIV. R. A.<br>ROW B. WOOD<br>2 G. HOFFAT<br>3 R. COHEN<br>4 J. JAFFIN<br>5 J. STEWART<br>6 D. HAUSLOHMER<br>7 W. MATTHEWS<br>STR S. MCKENSIE<br>COX D. HAUTH             | 20. M.I.T. BOAT CLUB<br>ROW J. MICKEY<br>2 T. DARROLL<br>3 R. DYKSTRA<br>4 W. FITZGERALD<br>5 D. GUNTER<br>6 J. KOLEGA<br>7 A. HERREUX<br>STR J. LARSON<br>COX M. TOBIAS                 | 30. GEORGETOWN UNIVERSITY R. A.<br>ROW L. NAPOLITANO<br>2 J. CAREY<br>3 M. FRASCO<br>4 J. NINN<br>5 S. CURRIN<br>6 M. RICARDI<br>7 T. ONEAL<br>STR M. RUTER<br>COX P. LYNCH           | 40. BROWN UNIVERSITY<br>ROW C. MOCK<br>2 K. REITH<br>3 M. SALTMARSH<br>4 J. WAWARO<br>5 B. BAHKE<br>6 P. CONDAXIS<br>7 M. JACOBS<br>STR P. MARTHA<br>COX A. BEAR                         |



# 5. Elite Fours

11:30am

Schaefer Trophy

White Bow Markers with Red Numbers

- |   |   |   |   |
|---|---|---|---|
| <p>1. POTOMAC BOAT CLUB<br/>ROW S. SWAYZE<br/>2 T. CHARLTON<br/>3 R. BRAYTON<br/>STR L. HOUGH<br/>COX P. HOFFMAN</p> <p>2. N.I.T. BOAT CLUB<br/>ROW G. DRAKELEY<br/>2 T. KISH<br/>3 J. HEALY<br/>STR M. PICKRELL<br/>COX M. HEWMAN</p> <p>3. HARVARD UNIVERSITY<br/>ROW J. DONALDSON<br/>2 O. BIXBY<br/>3 J. BROCK<br/>STR O. SCHOLFE<br/>COX R. LARSON</p> <p>4. HARVARD UNIVERSITY<br/>ROW J. SAVARESE<br/>2 W. UERINS<br/>3 J. WHITE<br/>STR W. BRYZ-GORNIA<br/>COX W. CZATKOWSKI</p> <p>5. CORNELL UNIVERSITY CREW<br/>ROW E. BOOTH<br/>2 M. TURGEON<br/>3 R. LAWRENCE<br/>STR K. WALSH<br/>COX S. UNTERMAN</p> <p>6. RUTGERS UNIV.<br/>ROW R. SCHMITT<br/>2 S. CHRISTENSE<br/>3 M. BRESTLE<br/>STR M. PICKLER<br/>COX J. CANINO</p> <p>7. VESPER B. C.<br/>ROW C. COFFEY<br/>2 P. HAYES<br/>3 J. MATHEWS<br/>STR D. VREUGHDENHIL<br/>COX K. DREYFUSS</p> <p>8. PRINCETON UNIV. R. A.<br/>ROW S. FISHER<br/>2 R. MAST<br/>3 M. PSYCHE<br/>STR J. COFFEE<br/>COX G. DASH</p> <p>9. CORNELL UNIVERSITY CREW<br/>ROW H. IVERHART<br/>2 C. DRAKE<br/>3 B. ANDREAS<br/>STR B. BEHM<br/>COX J. HOWE</p> <p>10. COLLEGE B.C. OF PENN<br/>ROW V. HOLLINGSWORTH<br/>2 A. COOK<br/>3 S. COLGAN<br/>STR R. PALZEWSKI<br/>COX A. HERMAN</p> | <p>11. MASSACHUSETTS, U. OF, R. A.<br/>ROW R. CULLEN<br/>2 D. ASSAD<br/>3 R. MAAGERO<br/>STR P. FROST<br/>COX A. BURTON</p> <p>12. YALE UNIVERSITY<br/>ROW A. ROME<br/>2 T. RUTHERFORD<br/>3 J. DUKE<br/>STR T. WOOD<br/>COX K. SOUTHWORTH</p> <p>13. MIXED ENTRY<br/>ROW B. BYRD<br/>2 J. FORRESTER<br/>3 P. HAYES<br/>STR J. BRINSFIELD<br/>COX A. FISCHER</p> <p>14. U. S. COAST GUARD ACAD.<br/>ROW B. EISENER<br/>2 D. KUZANEK<br/>3 P. MORRIS<br/>STR D. ROSS<br/>COX J. HASS</p> <p>15. BROWN UNIVERSITY<br/>ROW C. BERRY<br/>2 M. O'DAY<br/>3 E. DUBOIS<br/>STR D. DUDEK<br/>COX R. COLBORN</p> <p>16. DARTMOUTH ROWING CLUB<br/>ROW R. FOERSTER<br/>2 K. BOLTON<br/>3 M. WALSH<br/>STR D. FOWLER<br/>COX D. GARDNERIU</p> <p>17. BOSTON UNIVERSITY<br/>ROW T. CLASSEN<br/>2 M. WALTON<br/>3 F. BUESSER<br/>STR A. MCCAIG<br/>COX S. FREEDMAN</p> <p>18. U. S. NAVAL ACADEMY<br/>ROW G. LANGLEY<br/>2 D. SAYNER<br/>3 R. SITLER<br/>STR G. MORRISON<br/>COX B. THOMANN</p> <p>19. MARIST COLLEGE<br/>ROW M. BELTER<br/>2 B. KELLASHER<br/>3 W. OALUSON<br/>STR S. SCHNEECK<br/>COX M. OHUIS</p> <p>20. YALE UNIVERSITY<br/>ROW M. SALAMF<br/>2 C. KAITNER<br/>3 J. HAMILTON<br/>STR P. GRUBSTEIN<br/>COX J. PRINTZLAU</p> | <p>21. HARVARD BUSINESS SCH R. C.<br/>ROW J. IANLEFUKEN<br/>2 D. ANDERSON<br/>3 A. GAULD<br/>STR G. ULMSTEAD<br/>COX C. DRUMMOND</p> <p>22. COLLEGE B.C. OF PENN<br/>ROW J. ROULSTON<br/>2 R. JOHNSON<br/>3 S. THORN<br/>STR J. HOOMAY<br/>COX S. CADES</p> <p>23. U. S. NAVAL ACADEMY<br/>ROW W. FELKER<br/>2 D. BURDINE<br/>3 L. DAVIDSON<br/>STR D. FREDERICK<br/>COX B. AKIYAMA</p> <p>24. MIXED ENTRY<br/>ROW *, SELLICK<br/>2 *, SUTTON<br/>3 *, PETERSON<br/>STR *, SUTTON<br/>COX H. STEVERMAN</p> <p>25. BROWN UNIVERSITY<br/>ROW T. REUSCHE<br/>2 R. STARZAK<br/>3 E. STACK<br/>STR J. CORLISS<br/>COX A. AXELROD</p> <p>26. NEW HAVEN ROWING CLUB<br/>ROW R. MCCARTNEY<br/>2 N. THETFORD<br/>3 J. COOKE<br/>STR D. WIGHT<br/>COX J. INTROCOSSO</p> <p>27. JACKSONVILLE U. CREW<br/>ROW A. SKARS<br/>2 B. WADESON<br/>3 M. VERINGA<br/>STR B. HODGES<br/>COX N. WERLIC</p> <p>28. HARVARD UNIVERSITY<br/>ROW W. PERKINS<br/>2 H. PORTER<br/>3 W. POWDEN<br/>STR J. COOLEY<br/>COX B. LEVITCH</p> <p>29. ARGONAUT ROWING CLUB<br/>ROW J. BORHAM<br/>2 P. VANBODEGOM<br/>3 K. CAINES<br/>STR V. MIKLSEVIES<br/>COX P. CAINES</p> <p>30. WORCESTER POLYTECH. R. A.<br/>ROW E. HEBERG<br/>2 M. GOIN<br/>3 S. HERREL<br/>STR R. DAVISSON<br/>COX G. LOER</p> | <p>31. FLORIDA ATHLETIC CLUB<br/>ROW C. FILKO<br/>2 J. HOSS<br/>3 R. BATEMAN<br/>STR D. DINN<br/>CGJ S. MILKS</p> <p>32. BOSTON UNIVERSITY<br/>ROW P. SAMPSON<br/>2 L. ALEN<br/>3 W. EICHEL<br/>STR S. EDGARTON<br/>COX S. DOIG</p> <p>33. MIXED ENTRY<br/>ROW N. MALLIDIS<br/>2 R. CLAIR<br/>3 T. FITZPATRICK<br/>STR R. FITZPATRICK<br/>COX B. KLEIN</p> <p>34. U. S. NAVAL ACADEMY<br/>ROW E. MCNAIR<br/>2 J. KNOX<br/>3 K. KROZNER<br/>STR P. BRISTOL<br/>COX M. SPENCER</p> <p>35. HARVARD UNIVERSITY<br/>ROW J. ADAMS<br/>2 H. UAPP<br/>3 H. HOGERTY<br/>STR G. GOMDINER<br/>COX W. HOWES</p> <p>36. COLLEGE B.C. OF PENN<br/>ROW T. LOVE<br/>2 R. SCHELLER<br/>3 J. GEEMAX<br/>STR P. HEIDEKOPFER<br/>COX J. CHATSKY</p> <p>37. U. S. MERCHANT MARINE ACAD.<br/>ROW J. BRESTER<br/>2 P. HERMANN<br/>3 B. SUIG<br/>STR W. BENETT<br/>COX B. ROBBINS</p> <p>38. BOSTON UNIVERSITY<br/>ROW J. SHYK<br/>2 F. SCHREIBER<br/>3 C. GAYLORD<br/>STR D. ELA<br/>COX J. KAPLAN</p> <p>39. HARVARD UNIVERSITY<br/>ROW U. BONSTROM<br/>2 K. CORRELL<br/>3 E. TIMMINS<br/>STR R. DORTEUS<br/>COX C. BOIT</p> <p>40. NEBRASKA, U. OF, CREW<br/>ROW M. POTADLE<br/>2 P. JENSEN<br/>3 K. REGIER<br/>STR D. COCKSON<br/>COX J. HAHN</p> |
|---|---|---|---|



1974 WINNER POTOMAC BOAT CLUB, WASHINGTON D.C.

## 6. Novice Singles

11:45am

White Bow Markers with Blue Numbers

- |   |                                       |  |   |
|---|---------------------------------------|--|---|
| 1. R. HALSEY<br>ALDEN OCEAN SHELL ASSOC.        | 11. J. EDER<br>CAMBRIDGE BOAT CLUB    | 21. F. SUTTER<br>MALTA BOAT CLUB         | 31. M. KLUMPP<br>WILLIAMS COLLEGE B. C.       |
| 2. W. ROSENBERG<br>CAMBRIDGE BOAT CLUB          | 12. S. LEONARD<br>ITHACA COLLEGE      | 22. C. DILLON<br>MINNESOTA R. C.         | 32. W. MORAN<br>HARTFORD BARGE CLUB           |
| 3. M. EVANS<br>UNION BOAT CLUB                  | 13. D. METZGER<br>POTOMAC BOAT CLUB   | 23. T. GECECKAS<br>FAIRMONT R. A.        | 33. J. LUBIEMIR<br>MARIETTA COLLEGE R. A.     |
| 4. J. NEWHOUSE<br>UNION BOAT CLUB               | 14. P. MOHTI<br>UNION BOAT CLUB       | 24. C. WISE<br>CAMBRIDGE BOAT CLUB       | 34. S. MAFFY<br>U. S. NAVAL ACADEMY           |
| 5. G. RIFE<br>FLORIDA ATHLETIC CLUB             | 15. S. KINDER<br>NARRAGANSETT B. C.   | 25. M. MC ELROY<br>RIVERSTIDE BOAT CLUB  | 35. C. FEUSAHRENS<br>REMXE ROWING CLUB        |
| 6. P. GARRACZESKI<br>CAMBRIDGE BOAT CLUB        | 16. N. MC CULLY<br>NARRAGANSETT B. C. | 26. D. FROST<br>U. S. NAVAL ACADEMY      | 36. C. PATTESON<br>BELMONT ROWING ASSOC. CLUB |
| 7. M. SWANSON<br>MINNESOTA R. C.                | 17. R. ORSI<br>BOSTON UNIVERSITY      | 27. D. KELLEY<br>SAGAMORE ROWING ASSOC.  | 37. J. SIEMUM<br>CHOATE SCHOOL                |
| 8. P. FIORE<br>BUCKINGHAM BROWNE AND NICHOLS    | 18. B. CRUICKSHANK<br>YALE UNIVERSITY | 28. R. NYCE<br>WORCESTER POLYTECH. R. A. | 38. S. GILARDINO<br>HARVARD UNIVERSITY        |
| 9. G. HILL<br>CAMBRIDGE BOAT CLUB               | 19. R. MARTEL<br>BOSTON UNIVERSITY    | 29. C. DODD<br>WORCESTER POLYTECH. R. A. | 39. W. SPROAT<br>UNION BARGE CLUB             |
| 10. H. STUART JR.<br>BELMONT ROWING ASSOC. CLUB | 20. K. OSTENDORF<br>POTOMAC BOAT CLUB | 30. A. ISAAC<br>HARTFORD BARGE CLUB      | 40. J. PICKERING II<br>HARVARD UNIVERSITY     |

## 7. Intermediate Fours

12:10pm

Green Bow Markers with White Numbers

- |   |   |   |   |
|---|---|---|---|
| 1. U. S. COAST GUARD ACAD.<br>BOW T. LINNSTRUM<br>2 B. MCGEE<br>3 J. SWEENEY<br>STR T. FULLAM<br>COX G. WILTSHIRE | 11. RUTGERS UNIV.<br>BOW S. CMIKLINSKI<br>2 J. ALTMAN<br>3 J. PATERSON<br>STR M. LACORTE<br>COX J. GURKOVICH        | 21. MARIST COLLEGE<br>BOW B. HENNETT<br>2 J. SISK<br>3 C. JOSEPHS<br>STR C. RTORDAN<br>COX T. CONWAY                    | 31. HOLY CROSS COLLEGE<br>BOW C. GARRETY<br>2 B. O'NEIL<br>3 J. SHEA<br>STR J. TOOMEY<br>COX K. SULLIVAN                  |
| 2. U. S. NAVAL ACADEMY<br>ROW D. DEGEUS<br>2 C. JOACHIM<br>3 G. WHEELER<br>STR K. KNOIZEN<br>COX J. MCGOWAN       | 12. BROOKS SCHOOL CREW<br>BOW M. FRIEL<br>2 M. HOLDER<br>3 M. WYMAN<br>STR M. CHURBUCK<br>COX M. SWANGER            | 22. GEORGETOWN UNIVERSITY R. A.<br>BOW P. BONANNO<br>2 T. LE SEVOUR<br>3 J. KING<br>STR J. CIECIMIRSKI<br>COX J. ZELLER | 32. TRINITY COLLEGE<br>BOW M. HACHEY<br>2 C. POOLE<br>3 J. PLAGENHOFF<br>STR J. CHAPIN<br>COX D. GREENSPAN                |
| 3. HARVARD UNIVERSITY<br>BOW J. HEHL<br>2 T. SMITH<br>3 B. WILEY<br>STR B. FULLER<br>COX J. ROTHSTEIN             | 13. WILLIAMS COLLEGE B. C.<br>BOW M. RUDICK<br>2 M. ANDERSON<br>3 M. TABOR<br>STR M. MACDONALD<br>COX M. CARPENTER  | 23. NEW HAVEN ROWING CLUB<br>BOW C. MELHADO<br>2 P. JACHYM<br>3 T. POUND<br>STR J. WALKER<br>COX E. EGGERT              | 33. ITHACA COLLEGE<br>BOW T. LEONARD<br>2 M. GROTEVANT<br>3 J. DIETZ<br>STR M. CRAMES<br>COX M. EVANS                     |
| 4. YALE UNIVERSITY<br>BOW H. STANISLAW<br>2 J. WHITESIDE<br>3 J. TAYLOR<br>STR T. DEBEVOISE<br>COX K. JAEGER      | 14. NORTHEASTERN UNIVERSITY<br>BOW R. RAWNSLEY<br>2 P. HERLIHY<br>3 P. NOSIGLIA<br>STR P. DANFORTH<br>COX J. CONROY | 24. FLORIDA INST. OF TECH.<br>BOW B. ASPEN<br>2 D. COPELAND<br>3 G. ANGUS<br>STR T. WAHLGREN<br>COX                     | 34. BLOOD STREET SCULLS<br>BOW M. DRISCOLL<br>2 J. HUGHES<br>3 J. PROBOIUS<br>STR B. LONGA<br>COX J. MCHANEY              |
| 5. UNION BOAT CLUB<br>BOW P. SPRENSER<br>2 R. WOLFF<br>3 D. LIVINGSTON<br>STR W. BAKER<br>COX M. MERKEL           | 15. GUNNERY SCHOOL<br>BOW S. PROSSER<br>2 C. RINDOS<br>3 E. PICKRELL<br>STR S. BRADFORD<br>COX F. HOLMBERG          | 25. MASSACHUSETTS, U. OF, R. A.<br>BOW W. CARRINGTON<br>2 S. FRACKLETON<br>3 J. MOYNIHAN<br>STR D. BURKE<br>COX M. LYLE | 35. WORCESTER POLYTECH. R. A.<br>BOW M. O'LEARY<br>2 J. O'CONNOR<br>3 R. PREDELLA<br>STR R. RASLAVSKY<br>COX C. SACCOCCIO |
| 6. L.T.I. ROWING CLUB<br>BOW J. PLUNKETT<br>2 D. GRASSICK<br>3 B. SULLIVAN<br>STR K. CASEY<br>COX R. JAY          | 16. WORCESTER STATE COLLEGE<br>BOW M. LAWLER<br>2 A. HARRIS<br>3 R. DUVAL<br>STR M. HADLEY<br>COX V. MAHONEY        | 26. WESLEYAN UNIV. CREW CLUB<br>BOW S. REYNOLDS<br>2 P. HANSEN<br>3 J. PETCHLER<br>STR E. POSTEL<br>COX S. WALKER       | 36. RHODE ISLAND, U. OF, R. A.<br>BOW R. WILHELM<br>2 G. BANNON<br>3 R. MCGOVERN<br>STR R. WISE<br>COX D. MURRAY          |
| 7. M.I.T. BOAT CLUB<br>BOW P. KESTER<br>2 C. WALES<br>3 S. PEARSON<br>STR D. POULIN<br>COX T. STRAT               | 17. DARTMOUTH ROWING CLUB<br>BOW G. GIETH<br>2 J. LEADEM<br>3 D. DALURY<br>STR B. BRENEGAR<br>COX B. DONNELLY       | 27. ST. JOHN'S UNIV. CREW CLUB<br>BOW C. DUKAS<br>2 J. MCCARTHY<br>3 F. MAHR<br>STR J. MONAHAN<br>COX M. CIELO          | 37. BUCKINGHAM BROWNE & NICHOLS<br>BOW T. DAVIS<br>2 D. MCEVOY<br>3 G. GREELY<br>STR R. DESCOGNETS<br>COX I. O'CONNELL    |
| 8. BROWN UNIVERSITY<br>BOW W. SCHOLTZ<br>2 S. GORDON<br>3 S. CAVANAUGH<br>STR C. BIDDLE<br>COX L. FIELDER         | 18. SYRACUSE ALUMNI R. A.<br>BOW J. TAPSCOTT<br>2 M. LOWELL<br>3 R. GARDNER<br>STR R. DEREMER<br>COX R. MORILLAS    | 28. SAGAMORE ROWING ASSOC.<br>BOW P. HEALEY<br>2 V. YOSILLO<br>3 R. BAUER<br>STR K. HELDER<br>COX A. FRIEDMAN           | 38. MOSES BROWN SCHOOL<br>BOW P. DENBYSHIRE<br>2 D. KATZ<br>3 R. DENBYSHIRE<br>STR M. ALLEN<br>COX S. TRIEDMAN            |
| 9. CONNECTICUT COLLEGE R.A.<br>BOW W. DAVIS<br>2 L. JOHNSON<br>3 R. SPRAGUE<br>STR A. HARRIS<br>COX D. KEES       | 19. BOSTON UNIVERSITY<br>BOW E. GARDNER<br>2 D. DEITZ<br>3 M. RAPHEL<br>STR A. ZAIS<br>COX S. FREDMAN               | 29. TAMPA, UNIV. OF<br>BOW E. PRICE<br>2 M. ALTSHULER<br>3 C. DICKENS<br>STR P. CORK<br>COX R. MCCORD                   | 39. CHOATE SCHOOL<br>BOW M. SEIROLD<br>2 K. ROBINSON<br>3 R. EPFANID<br>STR M. HAGAN<br>COX S. TRUITT                     |
| 10. PRINCETON UNIV. R. A.<br>BOW M. STEINHARDT<br>2 D. DOUGLAS<br>3 J. GALGON<br>STR M. HOLSTEN<br>COX M. SANKEY  | 20. NEW YORK ATHLETIC CLUB<br>BOW W. WELSH<br>2 S. LAHR<br>3 T. DELANEY<br>STR J. FOLFY<br>COX R. BENNETT           | 30. NEW YORK ROWING ASSOC.<br>BOW B. STRINGER<br>2 J. WALSH<br>3 G. DANAMER<br>STR P. KONOPKA<br>COX S. QUAGLINANO      | 40. NOBLE & GREENOUGH SCHOOL<br>BOW M. CHARONKIFR<br>2 A. GIFFORD<br>3 S. LELAND<br>STR L. HUTCHINS<br>COX M. JACKSON     |

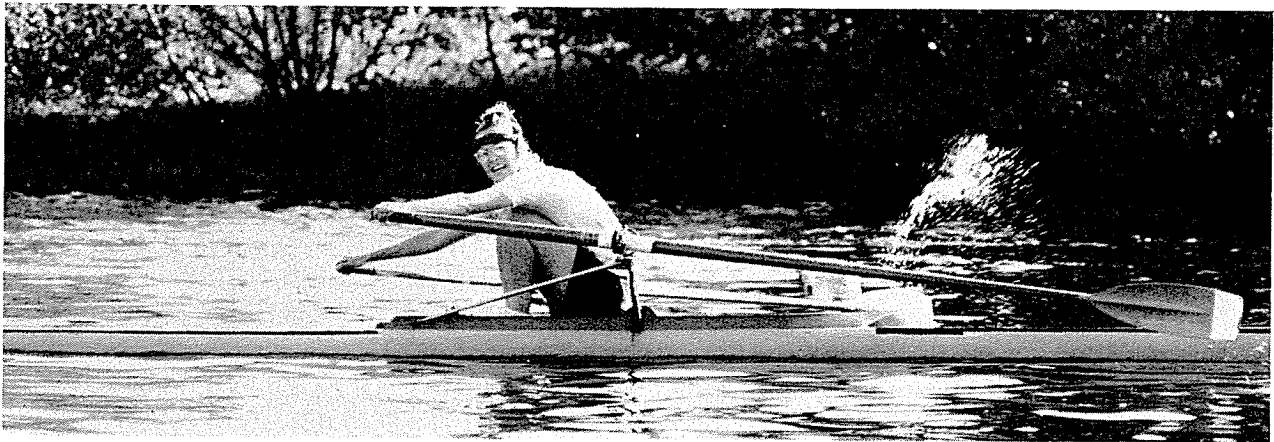


## 8. Women's Singles

Blue Bow Markers with White Numbers

12:25pm

- |   |  |  |  |
|---|--|--|--|
| 1. G. PIENSON<br>CAMBRIDGE BOAT CLUB          | 9. S. FOURAKER<br>CAMBRIDGE BOAT CLUB      | 17. C. CLARKE<br>CAMBRIDGE BOAT CLUB           | 25. R. LATHROP<br>RADCLIFFE COLLEGE CREW         |
| 2. W. ROYDEN<br>COLLEGE R.C. OF PENN          | 10. M. GREIG<br>CORNELL WOMEN'S CREW       | 18. P. MYNAUGH<br>BACHELORS BARGE CLUB         | 26. S. CHASE<br>WORCESTER POLYTECH. R. A.        |
| 3. C. PEPIN<br>LAVAL R. C.                    | 11. K. CONSTANT<br>VESPER B. C.            | 19. S. VAISSTERE<br>BOSTON UNIVERSITY          | 27. A. WARNER<br>YALE U. WOMEN'S VARSITY CREW    |
| 4. G. BERNIER<br>LAVAL R. C.                  | 12. F. BOURBEAU<br>BOUCHEVILLE ROWING CLUB | 20. C. MAISSONFIVE<br>LAVAL R. C.              | 28. P. WILKINSON<br>GEORGE WASHINGTON U. WOMEN'S |
| 5. S. HARVEY<br>POTOMAC BOAT CLUB             | 13. M. MC DANIEL<br>CAMBRIDGE BOAT CLUB    | 21. D. KTRCHMER<br>MASSACHUSETTS, WOMEN'S CREW | 29. S. ELA<br>EASTERN DEVELOPMENT CAMP           |
| 6. K. KALKHOF<br>UNIVERSITY BARGE CLUB        | 14. E. HILLS<br>NEW HAMPSHIRE, U. OF       | 22. H. STEPHENSON<br>CAMBRIDGE BOAT CLUB       | 30. M. RAE<br>BOUCHEVILLE ROWING CLUB            |
| 7. B. O'REILLY<br>MASSACHUSETTS, WOMEN'S CREW | 15. R. COLKER<br>RADCLIFFE COLLEGE CREW    | 23. J. LEPAGE<br>LAVAL R. C.                   | 31. P. GOMES<br>NARRAGANSETT B. C.               |
| 8. R. CHASE<br>RADCLIFFE COLLEGE CREW         | 16. M. LEFEBVRE<br>LAVAL R. C.             | 24. A. MC KINNON<br>NARRAGANSETT B. C.         | 32. N. STORRS<br>COLLEGE R.C. OF PENNSYLVANIA    |



SENIOR FOURAKER CAMBRIDGE BOAT CLUB

# NEWSPAPERMEN



A lot of people work at The Globe. What most of them do is pretty far removed from the fabled chores of "Front Page Farrell" and Clark Kent. There are some reporters, correspondents, editors, and photographers that get all the fame and glory, or what there is of it. And then there are guys like pressmen Bob Godfrey, Bud Dyer, John Leahy, and Bill Donlon.

They're the professionals who get the paper out; who make sure that 99.99% of the hundreds of thousands of papers that The Globe prints every day are graphically and typographically clear and easy to read.

No pressman ever won a Pulitzer Prize for great newspaper work. But without the professionalism they bring to their job, The Globe, and papers like it, would never see the light of day.

When you read The Boston Globe, you're reading the work of a lot of people whom you'll never meet, never know about, and probably never think about. But if you think The Globe is a good newspaper, these guys have a lot to do with it.

**The Boston Globe**

Have you seen The Globe today?

# 9. Junior Eights

12:55pm

Red Bow Markers with Yellow Numbers

- |   |  |  |  |
|---|--|--|--|
| <p>1. FATHER JUDGE H. S.<br/>         ROW R. WALLS<br/>         2 U. SASSHAW<br/>         3 D. MURAWSKI<br/>         4 J. ADLER<br/>         5 T. FRITSCH<br/>         6 E. FROBERG<br/>         7 J. GALGON<br/>         STR C. MURRAY<br/>         COX D. VOGELMAN</p>          | <p>11. BACK BAY VIKING R.A.<br/>         ROW B. CRESS<br/>         2 K. MCCARPON<br/>         3 T. MILLER<br/>         4 W. FERRY<br/>         5 S. LOVE<br/>         6 P. GREBENSCHIKOFF<br/>         7 P. CROWLEY<br/>         STR M. WELSON<br/>         COX M. STEFLMAN</p>    | <p>21. M.I.T. BOAT CLUB<br/>         ROW T. SVENE<br/>         2 T. PAPPAS<br/>         3 J. FLEMING<br/>         4 M. LEAS<br/>         5 T. POUNDS<br/>         6 S. HORN<br/>         7 H. WRIGHT<br/>         STR M. BLOSSER<br/>         COX R. NEUMAN</p>                      | <p>31. ITHACA COLLEGE<br/>         ROW I. PROCIOR<br/>         2 D. ROBINSON<br/>         3 S. MEADOW<br/>         4 R. SWARTHOUT<br/>         5 C. GALAGHEP<br/>         6 R. ALLFN<br/>         7 D. DE VITTO<br/>         STR T. ROGERSON<br/>         COX D. LEWIS</p>         |
| <p>2. PHILLIPS EXETER ACADEMY<br/>         ROW E. CHANDLER<br/>         2 D. MURRAY<br/>         3 D. BRADSHAW<br/>         4 M. JOHNSTON<br/>         5 C. BATAILLARD<br/>         6 R. WARNER<br/>         7 A. SHEEHAN<br/>         STR D. ROY<br/>         COX N. KAY</p>     | <p>12. NORTHFIELD MT. HERMON SCHOOL<br/>         ROW L. JENKES<br/>         2 M. KILLORAN<br/>         3 T. GEORGE<br/>         4 C. SEAL<br/>         5 D. ALLENBY<br/>         6 J. SPENCE<br/>         7 S. HIRSHARD<br/>         STR B. HAYER<br/>         COX P. WEIS</p>     | <p>22. BOSTON UNIVERSITY<br/>         ROW M. GILMORE<br/>         2 D. MERCER<br/>         3 H. CHICKINSKI<br/>         4 M. RAND<br/>         5 D. BUTTLOPH<br/>         6 J. NIUGENT<br/>         7 J. OLSEN<br/>         STR M. VON ARX<br/>         COX R. SINDELL</p>           | <p>32. CHOATE SCHOOL<br/>         ROW D. ORTHWEIFIN<br/>         2 G. OVERBAGH<br/>         3 K. METZGER<br/>         4 E. MALCHODT<br/>         5 A. DOUGLAS<br/>         6 C. STOUT<br/>         7 C. SANTORO<br/>         STR T. FOX<br/>         COX B. WALKER</p>             |
| <p>3. PHILLIPS EXETER ACADEMY<br/>         ROW J. LEFESS<br/>         2 C. GAYLORD<br/>         3 E. CHUCLA<br/>         4 D. COOK<br/>         5 K. KUNZE<br/>         6 J. REICHENBACH<br/>         7 J. SAMPLE<br/>         STR M. CANNON<br/>         COX S. COLE</p>         | <p>13. YALE UNIVERSITY<br/>         ROW M. MILLER<br/>         2 J. BOUSCAREN<br/>         3 B. SCHNOOR<br/>         4 D. JOHNSTONE<br/>         5 P. STEKL<br/>         6 D. FREDERICK<br/>         7 B. KUNKLER<br/>         STR J. DICREST<br/>         COX A. FISHER</p>       | <p>23. M.I.T. BOAT CLUB<br/>         ROW C. VENTIMIGLIA<br/>         2 B. FURTH<br/>         3 M. SALOMONE<br/>         4 J. INLENFELDT<br/>         5 K. HEWSON<br/>         6 C. TELLEFSEN<br/>         7 K. THOMAS<br/>         STR L. FAULK<br/>         COX C. MOHARA</p>       | <p>33. ST. JOHNS H. S.<br/>         ROW R. DUMPHY<br/>         2 B. ERMILIO<br/>         3 B. DOYLE<br/>         4 G. LEARY<br/>         5 C. BOOTH<br/>         6 B. LABONTE<br/>         7 T. CIRAS<br/>         STR J. SHEA<br/>         COX P. BAILEY</p>                      |
| <p>4. PHILLIPS ACADEMY<br/>         ROW P. BENCA<br/>         2 D. BLOOM<br/>         3 C. GAUIN<br/>         4 K. PULLEY<br/>         5 M. RISBERG<br/>         6 A. ROSENTHAL<br/>         7 H. TOREASON<br/>         STR J. MONNEL<br/>         COX D. STREET</p>              | <p>14. BOSTON UNIVERSITY<br/>         ROW L. DOMENECH<br/>         2 M. HUEDEIN<br/>         3 J. MOLLOY<br/>         4 E. SCHEFTER<br/>         5 J. ACKERMAN<br/>         6 G. GNATOVICH<br/>         7 M. BALTODANO<br/>         STR J. HESSEL<br/>         COX M. MARTINEZ</p> | <p>24. TABOR ACADEMY R. A.<br/>         ROW R. MULREIN<br/>         2 F. JACKSON<br/>         3 M. HIGBIE<br/>         4 J. ROONEY<br/>         5 B. NOYES<br/>         6 J. HICKERSON<br/>         7 B. HARRINGTON<br/>         STR R. WICHMAN<br/>         COX T. HASKELL</p>      | <p>34. HARVARD UNIVERSITY<br/>         ROW B. ALLOCCA<br/>         2 M. KFEPE<br/>         3 F. MURPHY<br/>         4 G. PURDY<br/>         5 J. BERMAN<br/>         6 D. WOOD<br/>         7 D. SWANSON<br/>         STR P. WILLETT<br/>         COX H. YOU</p>                   |
| <p>5. WEST PARK S. S.<br/>         ROW T. WALL<br/>         2 J. ATALICK<br/>         3 F. HALL<br/>         4 J. VOS<br/>         5 R. WILEY<br/>         6 J. WILHELM<br/>         7 A. STARK<br/>         STR K. MCROBERTS<br/>         COX D. GEMMELL</p>                     | <p>15. WESLEYAN UNIV. CREW CLUB<br/>         ROW S. SCHNEIDER<br/>         2 B. HARDESTY<br/>         3 P. KAST<br/>         4 S. FOWMAN<br/>         5 L. SHREM<br/>         6 E. HERRITT<br/>         7 C. BOLAND<br/>         STR R. DAVIS<br/>         COX D. DRAUGHAN</p>     | <p>25. COLLEGE B.C. OF PENN<br/>         ROW R. WENGER<br/>         2 D. GIBSON<br/>         3 E. SCULTZ<br/>         4 G. TINTOR<br/>         5 J. LARSON<br/>         6 S. SHAEFER<br/>         7 J. ELLIS<br/>         STR S. MOOREHOUSE<br/>         COX J. O'CONNORS</p>        | <p>35. HARVARD UNIVERSITY<br/>         ROW K. ROBERTS<br/>         2 P. MCGEE<br/>         3 F. HATHAWAY<br/>         4 S. THOMAS<br/>         5 C. VOGELBRACH<br/>         6 B. YOUNG<br/>         7 T. COX<br/>         STR G. FULLER<br/>         COX J. WHITE</p>              |
| <p>6. TABOR ACADEMY R. A.<br/>         ROW C. CLAPP<br/>         2 E. SMITH<br/>         3 D. TWEEDALE<br/>         4 R. JOHNSON<br/>         5 S. CORWIN<br/>         6 B. MUTH<br/>         7 R. BENSON<br/>         STR D. MCCAIG<br/>         COX T. KENNELLY</p>             | <p>16. SIMSBURY H. S. CREW<br/>         ROW C. COOPER<br/>         2 R. BUZARD<br/>         3 K. SUTS<br/>         4 H. GOLDBERG<br/>         5 J. SMUTS<br/>         6 B. SMITH<br/>         7 J. BALBON<br/>         STR T. PAINE<br/>         COX D. HAYES</p>                  | <p>26. ST. JOHNS H. S.<br/>         ROW D. DUMAS<br/>         2 R. LATOUR<br/>         3 B. FARREY<br/>         4 J. CALHOUN<br/>         5 M. CURRAN<br/>         6 M. FONTAINE<br/>         7 M. FOLEY<br/>         STR C. CHALEKI<br/>         COX B. CALHOUN</p>                 | <p>36. HARVARD UNIVERSITY<br/>         ROW M. OKONSKI<br/>         2 M. SMITH<br/>         3 B. ANDERSON<br/>         4 J. ARNOLD<br/>         5 J. PARRISH<br/>         6 H. NONBOUQUETTE<br/>         7 S. HAZZULA<br/>         STR D. GILPATRICK<br/>         COX M. WALKER</p> |
| <p>7. UPPER CANADA COLLEGE<br/>         ROW G. WILDI<br/>         2 K. BEST<br/>         3 J. FLEMING<br/>         4 J. EICHERT<br/>         5 D. LINDSAY<br/>         6 B. MCILROY<br/>         7 M. LAWTON<br/>         STR T. TURNER<br/>         COX G. GORDON</p>            | <p>17. HARVARD UNIVERSITY<br/>         ROW C. LAFARGE<br/>         2 P. WILLIAMSON<br/>         3 E. DEMPSEY<br/>         4 A. SYDER<br/>         5 B. GREFFWOOD<br/>         6 A. DELACAL<br/>         7 K. HOLLAND<br/>         STR J. SCOTT<br/>         COX A. LAFARGE</p>     | <p>27. FAIRMONT R. A.<br/>         ROW C. BROWN<br/>         2 T. FREDERICKS<br/>         3 F. MCGILLIN<br/>         4 J. WHALEN<br/>         5 J. SHOLL<br/>         6 J. DALY<br/>         7 G. PUTMAN<br/>         STR J. GEITLER<br/>         COX S. MCWALLY</p>                 | <p>37. HARVARD UNIVERSITY<br/>         ROW D. MARSHAK<br/>         2 C. JOHNSON<br/>         3 J. BOGIN<br/>         4 J. BROWN<br/>         5 M. CAVAGNERO<br/>         6 A. DE MARS<br/>         7 K. MC MURCHY<br/>         STR P. HILTON<br/>         COX A. ELDREDGE</p>      |
| <p>8. NORTHFIELD MT. HERMON SCHOOL<br/>         ROW C. LACHANCE<br/>         2 A. JOHNSON<br/>         3 T. ALLEN<br/>         4 S. SMITH<br/>         5 N. KRIESER<br/>         6 J. ALBEE<br/>         7 A. COOK<br/>         STR K. LEHRER<br/>         COX M. CHOU</p>        | <p>18. BOSTON UNIVERSITY<br/>         ROW M. SCHLAUI<br/>         2 P. CRANE<br/>         3 D. TALOR<br/>         4 J. GRAY<br/>         5 D. ERLAGF<br/>         6 J. URBAN<br/>         7 T. FUSHRAN<br/>         STR D. DYLTS<br/>         COX G. RODINS</p>                    | <p>28. WILLIAMS COLLEGE B. C.<br/>         ROW M. ROBINSON<br/>         2 M. ADAMS<br/>         3 M. SHLANTA<br/>         4 M. ROBINSON<br/>         5 M. HUSS<br/>         6 M. SULLIVAN<br/>         7 M. AVELLAR<br/>         STR M. ALBERT<br/>         COX M. WILLIAMS</p>      | <p>38. NEW HAMPSHIRE, U. OF<br/>         ROW J. DREHER<br/>         2 B. TEMPLE<br/>         3 D. FORCIER<br/>         4 M. ROCHOLT<br/>         5 V. TODD<br/>         6 S. CHINBURG<br/>         7 G. HOCHGRAS<br/>         STR P. LEE<br/>         COX R. LONG</p>              |
| <p>9. WORCESTER POLYTECH. R. A.<br/>         ROW R. MARTIN<br/>         2 S. KAPURCH<br/>         3 P. ROCK<br/>         4 D. NASSANEY<br/>         5 L. MARINO<br/>         6 A. RESNICKK<br/>         7 R. GUIGLI<br/>         STR W. CATANACH<br/>         COX C. CARPETER</p> | <p>19. M.I.T. BOAT CLUB<br/>         ROW R. SILVERMAN<br/>         2 A. WADSWORTH<br/>         3 J. KOSLOV<br/>         4 G. GEORGE<br/>         5 J. PARK<br/>         6 S. YELIK<br/>         7 J. DUGAL<br/>         STR D. SHIRLEY<br/>         COX R. PRICE</p>               | <p>29. PENN A. C. ROWING ASSOC.<br/>         ROW L. BRIDKLEY<br/>         2 R. DELBIANCO<br/>         3 P. HORVAT<br/>         4 T. NOONE<br/>         5 R. MURRAY<br/>         6 T. STADULIS<br/>         7 M. GLEASON<br/>         STR S. WHALEN<br/>         COX S. BURGOGYNE</p> | <p>39. NEW HAMPSHIRE, WOMEN'S CREW<br/>         ROW S. MILLS<br/>         2 S. VANASELT<br/>         3 S. SASNER<br/>         4 S. BERNEY<br/>         5 A. NICOLOFF<br/>         6 E. LONG<br/>         7 T. LFE<br/>         STR S. HOCHGRAS<br/>         COX K. KEESSEY</p>     |
| <p>10. M.I.T. BOAT CLUB<br/>         ROW A. MINK<br/>         2 T. SHAPTON<br/>         3 K. REID<br/>         4 B. FLAGG<br/>         5 P. DENNEY<br/>         6 D. MIKA<br/>         7 R. GILMAN<br/>         STR R. LIGHT<br/>         COX R. STEIDLITZ</p>                    | <p>20. M.I.T. BOAT CLUB<br/>         ROW C. CHAPLIN<br/>         2 P. BALTUSIS<br/>         3 P. NAPPARI<br/>         4 G. FELIZ<br/>         5 R. DOWLING<br/>         6 E. SANDOVAL<br/>         7 M. DAVIS<br/>         STR R. MPINIG<br/>         COX R. HYMAN</p>             | <p>30. YALE UNIVERSITY<br/>         ROW UNKNOWN<br/>         2 UNKNOWN<br/>         3 UNKNOWN<br/>         4 UNKNOWN<br/>         5 UNKNOWN<br/>         6 UNKNOWN<br/>         7 UNKNOWN<br/>         STR UNKNOWN<br/>         COX UNKNOWN</p>                                      |  |

## 10. Intermed. Ltwt. Singles

Red Bow Markers with White Numbers

1:10pm

- |  |   |  |  |
|--|---|--|--|
| 1. D. ARROMEIT<br>CAMBRIDGE BOAT CLUB        | 11. D. VOGEL<br>YALE UNIVERSITY                 | 21. R. FRIES<br>WEST SIDE R. C.        | 31. R. CADY<br>ECORSE BOAT CLUB                |
| 2. J. PATTISON IV<br>UNIVERSITY BARGE CLUB   | 12. P. COSENZA<br>MALTA BOAT CLUB               | 22. F. LENTZ<br>NEW YORK ATHLETIC CLUB | 32. M. HAYES<br>RIVERSIDE BOAT CLUB            |
| 3. J. DAVIDSON III<br>VIRGINIA, U. OF, R. A. | 13. A. FAHERTY<br>U. S. MERCHANT MARINE ACAD.   | 23. J. MOORE<br>RIVERSIDE BOAT CLUB    | 33. V. MILLER JR.<br>UNIVERSITY BARGE CLUB     |
| 4. H. HODGSON JR.<br>CAMBRIDGE BOAT CLUB     | 14. D. LEE<br>RIVERSIDE BOAT CLUB               | 24. E. GRAHAM<br>CAMBRIDGE BOAT CLUB   | 34. * DAWF<br>WILLIAMS COLLEGE B. C.           |
| 5. * PELNERT<br>WILLIAMS COLLEGE B. C.       | 15. R. GOOD<br>VIRGINIA, U. OF, R. A.           | 25. M. SHINNICK<br>LAVAL R. C.         | 35. J. DREHER<br>NEW HAMPSHIRE, U. OF          |
| 6. R. LYNCH<br>NEW YORK ATHLETIC CLUB        | 16. R. EVENSEN<br>CAMBRIDGE BOAT CLUB           | 26. B. ENGEL<br>MALTA BOAT CLUB        | 36. P. PLIMPTON<br>NARRAGANSETT R. C.          |
| 7. J. CUTLER<br>RIVERSIDE BOAT CLUB          | 17. C. ROTH III<br>CAMBRIDGE BOAT CLUB          | 27. J. CHEESEBRO<br>MINNESOTA R. C.    | 37. R. MERPILL<br>RIVERSIDE BOAT CLUB          |
| 8. R. SHEETZ<br>CAMBRIDGE BOAT CLUB          | 18. P. WILHELM<br>NARRAGANSETT B. C.            | 28. W. ROMER<br>ITHACA COLLEGE         | 38. T. MARTIN<br>HARTFORD BARGE CLUB           |
| 9. T. KADIOGLU<br>NEW YORK ATHLETIC CLUB     | 19. L. DOMSE JR.<br>RUCKINGHAM BROWNE & NICHOLS | 29. M. WINTER<br>DARTMOUTH ROWING CLUB | 39. P. KING<br>OTTAWA ROWING CLUB              |
| 10. R. LYMAN<br>UNION BOAT CLUB              | 20. M. TOUKHY<br>NARRAGANSETT B. C.             | 30. R. DOXSEY<br>RIVERSIDE BOAT CLUB   | 40. R. SENGSTAKEN<br>WORCESTER POLYTECH. R. A. |

## 11. Pairs

White Bow Markers with Red Numbers

1:35pm

- |  |   |  |   |
|--|---|--|---|
| 1. HARVARD UNIVERSITY<br>BOW M. HELLER<br>STR D. SAWYIER         | 11. HARVARD UNIVERSITY<br>BOW T. HOWES<br>STR D. BOGHOSIAN        | 21. WISCONSIN, U. OF, CREW<br>BOW R. ELORANIA<br>STR R. ESDSETH  | 31. OTTAWA ROWING CLUB<br>BOW J. WEINSTEIN<br>STR G. ROKOSH       |
| 2. CORNELL UNIVERSITY CREW<br>BOW K. WALSH<br>STR G. LOCKE       | 12. VESPER B. C.<br>BOW G. PIANTESDOSI<br>STR P. SIMONE           | 22. U. S. COAST GUARD ACAD.<br>BOW A. TABUR<br>STR A. GRIMES     | 32. MARIST COLLEGE<br>BOW W. DAVIDSON<br>STR G. SCHAEFER          |
| 3. POTOMAC BOAT CLUB<br>BOW B. LYNCH<br>STR J. DEVLIN            | 13. VESPER B. C.<br>BOW J. GIAVIN<br>STR J. GAINER                | 23. DARTMOUTH ROWING CLUB<br>BOW S. JORDAN<br>STR L. HOPPERSTEAD | 33. UPPER CANADA COLLEGE<br>BOW T. BRITTON-POSTER<br>STR M. EVANS |
| 4. POTOMAC BOAT CLUB<br>BOW L. HOUGH<br>STR B. BRAYTON           | 14. YALE UNIVERSITY<br>BOW T. MCGRAW<br>STR D. GRIFFIN            | 24. YALE UNIVERSITY<br>BOW F. KLASKE<br>STR S. WILLIAMS          | 34. NOTRE DAME R. C.<br>BOW K. PALUSO<br>STR F. HEYRICK           |
| 5. HARVARD UNIVERSITY<br>BOW W. LOUCKS<br>STR M. RECKENWOLD      | 15. NEW YORK ATHLETIC CLUB<br>BOW F. PISANI<br>STR T. BONANNO     | 25. CORNELL UNIVERSITY CREW<br>BOW J. DUNN<br>STR B. STONE       | 35. LAVAL R. C.<br>BOW J. WIGGINS<br>STR A. WIGGINS               |
| 6. COLLEGE B.C. OF PENN<br>BOW S. COLGAN<br>STR V. HOLLINGSWORTH | 16. M.I.T. BOAT CLUB<br>BOW J. GORMAN<br>STR T. HIGGINS           | 26. COLLEGE B.C. OF PENN<br>BOW J. GEWAX<br>STR M. FOLEY         | 36. HARTFORD BARGE CLUB<br>BOW M. NICHOLS<br>STR P. PREITSSLER    |
| 7. NORTHEASTERN UNIVERSITY<br>BOW J. SLADEK<br>STR G. DOUGAN     | 17. MIXED ENTRY<br>BOW B. MILLER<br>STR J. MORONEY                | 27. NEW YORK ATHLETIC CLUB<br>BOW T. BANAHAN<br>STR R. TSCINKEL  | 37. SYRACUSE CHARGERS CLUB<br>BOW W. SANFORD<br>STR R. HIRSH      |
| 8. POTOMAC BOAT CLUB<br>BOW J. K. GREEN<br>STR B. E. ALEXANDER   | 18. MIXED ENTRY<br>BOW M. BORCHELT<br>STR T. ADAMS                | 28. HARVARD UNIVERSITY<br>BOW R. STEVENSON<br>STR P. REYNOLDS    | 38. RADCLIFFE COLLEGE CREW<br>BOW A. HALL<br>STR K. MOSS          |
| 9. COLLEGE B.C. OF PENN<br>BOW S. SUTTON<br>STR B. SELICK        | 19. MIXED ENTRY<br>BOW T. FLAMMANG<br>STR L. GLUCKMAN             | 29. MALTA BOAT CLUB<br>BOW D. ECK<br>STR C. BROWN                | 39. RADCLIFFE COLLEGE CREW<br>BOW R. LATHROP<br>STR G. RASMUSSEN  |
| 10. BOSTON UNIVERSITY<br>BOW D. CURTIS<br>STR J. TOWNSEND        | 20. FLORIDA INST. OF TECH.<br>BOW B. JURGENS<br>STR N. SCHLACHTER | 30. CORNELL UNIVERSITY CREW<br>BOW J. FARRELL<br>STR F. GARRY    |   |



WEST PARK SECONDARY SCHOOL JUNIOR EIGHT FROM ST. CATHERINE'S, ONTARIO



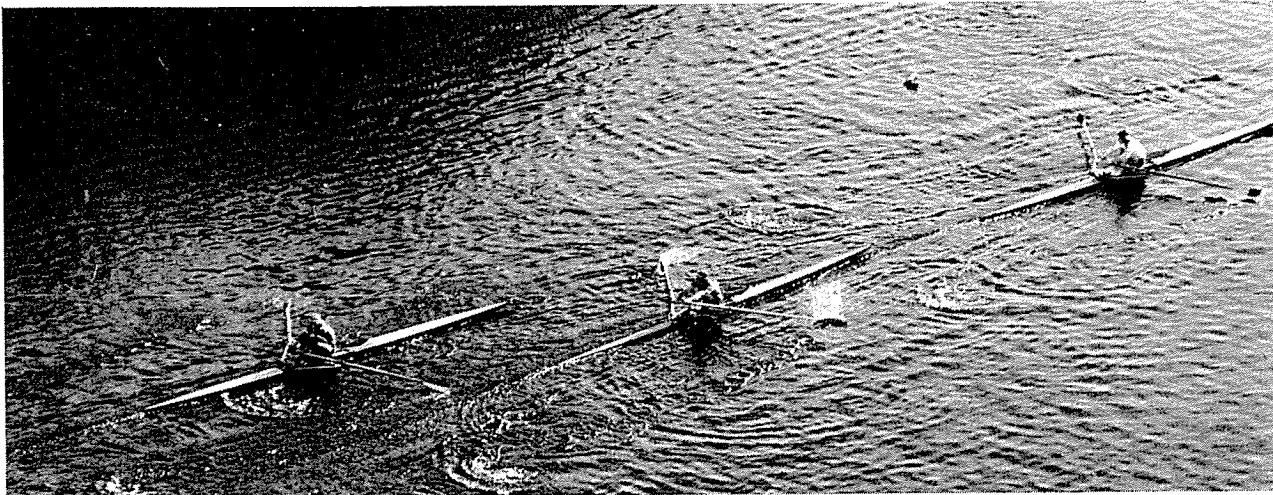
## 12. Intermediate Singles

Hawes Trophy

Green Bow Markers with White Numbers

1:55pm

- |  |   |                                       |  |
|--|---|---------------------------------------|--|
| 1. C. HAMILTON<br>NORTHFIELD HT. HERMON SCHOOL | 11. J. BORN<br>CAMBRIDGE BOAT CLUB          | 21. P. CROSS<br>NARRAGANSETT B. C.    | 31. E. SMITH<br>CAMBRIDGE BOAT CLUB        |
| 2. E. LYNCH JR.<br>CAMBRIDGE BOAT CLUB         | 12. G. WAKEMAN<br>MARIETTA COLLEGE R. A.    | 22. L. DAHMAN<br>UNION BOAT CLUB      | 32. R. PERGAMIN<br>MALTA BOAT CLUB         |
| 3. C. ANDERSON<br>POTOMAC BOAT CLUB            | 13. W. BRUDERICK<br>WILLIAMS COLLEGE B. C.  | 23. E. J. MEYERS<br>POTOMAC BOAT CLUB | 33. C. JORDAN<br>TRINITY COLLEGE           |
| 4. S. DULL<br>UNION BOAT CLUB                  | 14. J. RICKSECKER<br>NEW YORK ATHLETIC CLUB | 24. E. D'ALBA<br>UPDINE BARGE CLUB    | 34. D. BAKINOWSKI<br>CHARLES RIVER R.A.    |
| 5. R. BRENNAN<br>DETROIT BOAT CLUB             | 15. J. FOLTZ<br>UPDINE BARGE CLUB           | 25. R. ELLIOT<br>RIDLEY BOAT CLUB     | 35. W. BARRETT<br>CAMBRIDGE BOAT CLUB      |
| 6. B. MARTIN JR.<br>S. I. H. A.                | 16. B. OCONNOR<br>NORTHEASTERN UNIVERSITY   | 26. P. FOLDES<br>MALTA BOAT CLUB      | 36. C. FALLON<br>WORCESTER POLYTECH. R. A. |
| 7. A. MOSER<br>NARRAGANSETT B. C.              | 17. T. SWAYZE<br>POTOMAC BOAT CLUB          | 27. R. ELLIOTT<br>RIDLEY BOAT CLUB    | 37. D. FLAGG<br>UNION BOAT CLUB            |
| 8. A. ANDERSON<br>POTOMAC BOAT CLUB            | 18. A. HAWVA<br>CAMBRIDGE BOAT CLUB         | 28. J. ROGERS<br>CAMBRIDGE BOAT CLUB  | 38. J. DAVIDSON<br>CAMBRIDGE BOAT CLUB     |
| 9. P. BAPTISTE<br>UNION BOAT CLUB              | 19. V. VENTURA<br>NEW YORK ATHLETIC CLUB    | 29. T. PEASTER<br>TAMPA, UNIV. OF     | 39. R. SMITH<br>OTTAWA ROWING CLUB         |
| 10. R. ANDERSON<br>NARRAGANSETT B. C.          | 20. B. COLGAN<br>VESPER B. C.               | 30. N. CASE<br>YALE UNIVERSITY        | 40. H. HOWATT<br>BOSTON UNIVERSITY         |



INTERMEDIATE LIGHTWEIGHT SINGLE

Some of our  
best customers  
needed only one good  
reason to try  
time sharing.

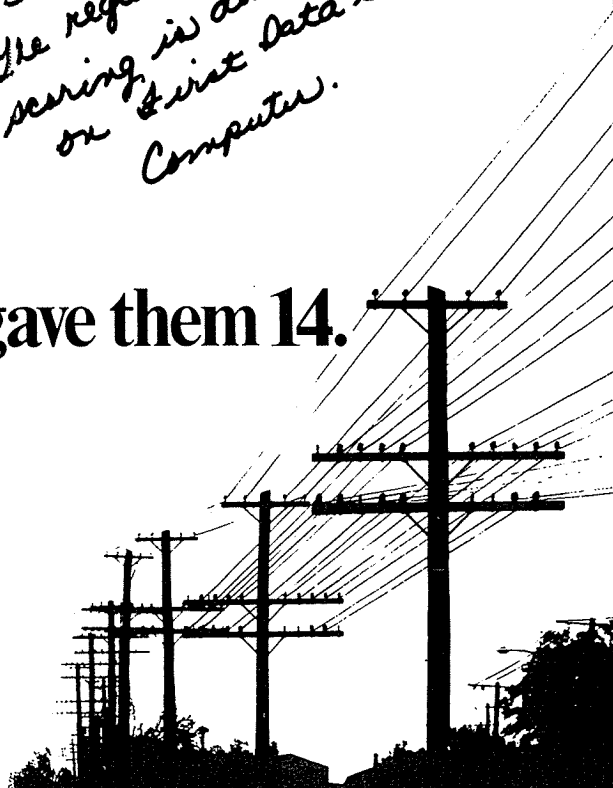
*P.S.  
The regatta's  
scoring is done  
on First Data's  
Computer.*

We gave them 14.

### Good Reason No. 12: Communications

No information is useful unless you can get to it quickly. With First Data's system you're as close to your data as the nearest phone. That's right, you can call into the system from any phone — anywhere. So look at it this way, wherever there's a phone — there's a computer. And our system can support any terminal made. So you can be sure that we'll be able to meet any communications requirements you have — even difficult or unusual ones.

First Data  
400 Totten Pond Road  
Waltham, Mass. 02154  
617-890-6701



# 13. Intermediate Eights

2:20pm

Boston Mayor's Trophy  
Green Bow Markers with White Numbers

- |   |  |  |  |
|---|--|--|--|
| 1. SYRACUSE ALUMNI R. A.<br>Bow J. MACVITTIE<br>2 E. JOHANSON<br>3 W. REID<br>4 G. JORDON<br>5 J. EISENBREY<br>6 R. SHANNON<br>7 J. BEGLEY<br>STR J. DENOLF<br>COX C. HOFFMAN       | 11. NORTHEASTERN UNIVERSITY<br>Bow P. McDEVITT<br>2 M. KALTEMBACH<br>3 J. HILL<br>4 P. BARROUR<br>5 W. FRITZ<br>6 H. CONSTABLE<br>7 R. HART<br>STR N. BERTOZZI<br>COX R. NECKES  | 21. WILLIAMS COLLEGE B. C.<br>Bow *.<br>2 *.<br>3 *.<br>4 *.<br>5 *.<br>6 *.<br>7 *.<br>STR *.<br>COX *.   | 31. WFSLEYAN UNIV. CREW CLUB<br>Bow A. VICKERS<br>2 J. MINGOLLA<br>3 J. MILLER<br>4 J. CANCELLO<br>5 P. CRESSMAN<br>6 P. KELLEY<br>7 N. ROGERSON<br>STR P. BROCK<br>COX A. HANNA |
| 2. COLLEGE B. C. OF PENNSYLVANIA<br>Bow R. LEMMON<br>2 H. BODECK<br>3 R. JOHNSON<br>4 N. BECK<br>5 S. THORN<br>6 H. BOZENSKE<br>7 A. COOK<br>STR J. HOONAN<br>COX S. CADES          | 12. BOSTON UNIVERSITY<br>Bow C. GAYLORD<br>2 R. SAMPSON<br>3 L. ALLEN<br>4 S. EDGARTON<br>5 W. EICHEL<br>6 R. ORSI<br>7 G. BALLENGER<br>STR M. RAPHEL<br>COX S. DOIG             | 22. AMHERST COLLEGE R. A.<br>Bow R. TROUTMAN<br>2 J. GREENMAN<br>3 E. DUDLEY<br>4 D. HEALD<br>5 J. HOWE<br>6 C. SELL<br>7 S. CLARK<br>STR F. ANTHONY<br>COX P. ZEITLER             | 32. DARTMOUTH ROWING CLUB<br>Bow S. SOMERVILLE<br>2 R. HOAG<br>3 R. YOCUM<br>4 T. HENTHILL<br>5 M. BROWN<br>6 C. DUNCAN<br>7 W. WECHSLER<br>STR C. VILLER<br>COX C. MACPHERSON   |
| 3. FLORIDA INST. OF TECH.<br>Bow R. ROBERTS<br>2 M. LEBLANC<br>3 P. ALLOR<br>4 R. MILLER<br>5 C. CABEEN<br>6 D. GABRIARD<br>7 P. NIELSON<br>STR B. HOPPE<br>COX W. FAULKNER         | 13. HOLY CROSS COLLEGE<br>Bow C. GARRITY<br>2 M. BARNELL<br>3 R. MURPHY<br>4 T. MCGANN<br>5 J. SHEA<br>6 B. ONEIL<br>7 B. PLANTE<br>STR J. TOOMEY<br>COX K. SULLIVAN             | 23. SCHUYLKILL B. C.<br>Bow J. KEALEY<br>2 J. SCIRLO<br>3 S. CESNA<br>4 T. KEALEY<br>5 T. RAFFERTY<br>6 F. HELWIG<br>7 D. RAGAN<br>STR R. COCO<br>COX M. MULLHOLLAND               | 33. FORDHAM R. A.<br>Bow T. DENARO<br>2 W. KIRCHHOFFER<br>3 E. LEVINS<br>4 J. LAUDON<br>5 G. LATIMER<br>6 N. CALLAGHAN<br>7 M. REIFERS<br>STR M. WHITE<br>COX C. CARPANZANO      |
| 4. BROWN UNIVERSITY<br>Bow J. FISCHER<br>2 D. PARKINSON<br>3 J. BOULTON<br>4 T. BOYLE<br>5 W. SCHOLTZ<br>6 S. GORDON<br>7 S. CAVANAUGH<br>STR Y. BIDDLE<br>COX L. FIELDER           | 14. YALE UNIVERSITY<br>Bow H. STANISLAW<br>2 B. WEBB<br>3 M. TRIFIRO<br>4 J. WHITESIDE<br>5 J. TAYLOR<br>6 R. ARNOLD<br>7 M. SALAMEH<br>STR P. GRUBSTEIN<br>COX N. HELM          | 24. U. S. COAST GUARD ACAD.<br>Bow B. LACHOWSKY<br>2 R. FORNASERI<br>3 C. BOEGEL<br>4 J. SCHOTT<br>5 B. MCCARTHY<br>6 B. REININGER<br>7 D. LLOYD<br>STR G. PROBERT<br>COX J. HASS  | 34. HARVARD BUSINESS SCH R. C.<br>Bow G. DEEGER<br>2 *.<br>3 *.<br>4 *.<br>5 *.<br>6 A. BLENK<br>7 R. BARROW<br>STR *.<br>COX M. TALBOT  |
| 5. CORNELL UNIVERSITY CREW<br>Bow T. BISHOP<br>2 R. SPRATT<br>3 T. SCHLIFMAN<br>4 H. GULBRANSEN<br>5 B. ANDREAS<br>6 B. TALMADGE<br>7 S. DAY<br>STR W. NOBLE<br>COX S. UBERMAN      | 15. WORCESTER POLYTECH. R. A.<br>Bow D. ELLIOT<br>2 D. WANDELL<br>3 D. PARSONS<br>4 S. FULTON<br>5 J. KFSSELI<br>6 D. ABELLS<br>7 P. FLEURANT<br>STR R. WARNOCK<br>COX M. FOISEY | 25. GEORGETOWN UNIVERSITY R. A.<br>Bow R. DEPONT<br>2 J. BROWN<br>3 D. SULLIVAN<br>4 R. MCCORMACK<br>5 H. MCENTEE<br>6 S. MAWN<br>7 N. KELLER<br>STR J. MCSHEA<br>COX R. FAHERTY   | 35. SPUYTEN DUYVIL R. C.<br>Bow K. WOODWARD<br>2 M. BORNSTEIN<br>3 J. STEGAL<br>4 D. FRENCH<br>5 T. CATTELL<br>6 G. FREIMARCK<br>7 C. ALLEGAERT<br>STR K. SMITH<br>COX T. NADEL  |
| 6. M.I.T. BOAT CLUB<br>Bow P. MALCHODI<br>2 C. DAVIDSON<br>3 D. CAMPANELLA<br>4 F. GAY<br>5 B. PRIDE<br>6 B. QUAY<br>7 M. SEAVEY<br>STR K. JENSEN<br>COX T. STRAT                   | 16. TRINITY COLLEGE<br>Bow H. FRIEDMAN<br>2 P. WENDLER<br>3 E. PARDOE<br>4 J. GROUS<br>5 P. VANLONN<br>6 H. GRAVES<br>7 S. BERGHAUSEN<br>STR R. EADIE<br>COX S. LOGAN            | 26. NOTRE DAME R. C.<br>Bow M. MURPHY<br>2 J. BUSTIN<br>3 D. HERBEK<br>4 P. SHAPER<br>5 B. TRACY<br>6 E. TAGGE<br>7 B. LANDUYT<br>STR D. ROBINSON<br>COX J. SANTELLANO             | 36. NEW HAVEN ROWING CLUB<br>Bow S. KING<br>2 T. PORTEP<br>3 P. WHITE<br>4 M. POLLACK<br>5 T. JAROCZEWICH<br>6 P. LINDHOLM<br>7 J. GRAVA<br>STR J. HULLAR<br>COX D. MODEL        |
| 7. U. S. NAVAL ACADEMY<br>Bow D. SAYNER<br>2 D. MCCREADY<br>3 G. KATILUS<br>4 R. SHEPPARD<br>5 J. CANADAY<br>6 G. LANGLEY<br>7 B. SITLER<br>STR S. MCHARTIN<br>COX R. THOMANN       | 17. MARIST COLLEGE<br>Bow J. CARBERRY<br>2 B. KELLACHER<br>3 B. JOSEPH<br>4 J. SISK<br>5 D. BELTER<br>6 C. RTORDAN<br>7 H. BELTER<br>STR G. TRACY<br>COX M. DAVIS                | 27. TAMPA, UNIV. OF<br>Bow C. DICKENS<br>2 R. RUDITZ<br>3 K. LOGAN<br>4 M. CLEMENTS<br>5 H. EDENFIELD<br>6 J. RAY<br>7 M. STANCIJ<br>STR D. THOMAS<br>COX B. MCCORD                | 37. L. I. T. ROWING CLUB<br>Bow J. O'DONNELL<br>2 P. CICCONE<br>3 J. CARON<br>4 R. GAUDET<br>5 D. RUANE<br>6 T. DOYLE<br>7 T. ST. JEAN<br>STR J. MCCUTCHEON<br>COX M. CICCONE    |
| 8. RUTGERS UNIV.<br>Bow J. ALTMAN<br>2 J. CLARK<br>3 K. BOGGIO<br>4 B. RIGNEY<br>5 C. WETTSTEIN<br>6 P. KEIRAN<br>7 D. HUETTIG<br>STR T. RIETH<br>COX J. CANINO                     | 18. KIRKLAND HOUSE<br>Bow G. STEVENS<br>2 S. SMITH<br>3 S. ROSENBLUM<br>4 J. STEIN<br>5 B. JONES<br>6 W. ROHFRI<br>7 L. POOS<br>STR H. NESBIT<br>COX B. GALTON                   | 28. DARTMOUTH ROWING CLUB<br>Bow F. LEE<br>2 G. VETTER<br>3 D. JOHNSON<br>4 A. JESSIMAN<br>5 K. SOMERVILLE<br>6 E. PEPPER<br>7 S. CHARDON<br>STR T. HULL<br>COX J. UOTA            | 38. NEW HAMPSHIRE, U. OF<br>Bow N. STACY<br>2 P. LATDURETTE<br>3 J. GREENE<br>4 J. TABIASON<br>5 J. CALHOUN<br>6 R. DURKEE<br>7 M. KEEMAN<br>STR D. SAWYER<br>COX S. GALLAGHER   |
| 9. PRINCETON UNIV. R. A.<br>Bow P. ANGELLICA<br>2 J. HEYDENREICH<br>3 R. NIEHANS<br>4 T. MCNAMARA<br>5 R. JENSEN<br>6 H. WERT<br>7 J. SMOLOWE<br>STR R. LINDER<br>COX M. CUNNINGHAM | 19. HARVARD UNIVERSITY<br>Bow S. ENNIS<br>2 G. GARDNER<br>3 J. GUT<br>4 A. HALE<br>5 J. LICARINI<br>6 G. NITZKOWSKY<br>7 G. ROOS<br>STR J. WILLIAMS<br>COX M. SMALL              | 29. MIDDLETOWN ROWING CLUB<br>Bow J. CASPER<br>2 B. STEKL<br>3 B. COUGHLIN<br>4 B. CLIFFORD<br>5 M. OTT<br>6 N. MESSINA<br>7 G. DUPIESSIS<br>STR T. CLIFFORD<br>COX D. MARIN       | 39. DREXEL UNIVERSITY CREW<br>Bow J. HOPKINS<br>2 D. BIDDLE<br>3 J. SSROWATKA<br>4 J. PIKUS<br>5 J. FOX<br>6 B. TOMCHAK<br>7 P. SHAEFFER<br>STR D. FERNEY<br>COX P. MAHER        |
| 10. ITHACA COLLEGE<br>Bow J. COX<br>2 M. BROOKS<br>3 J. JARREAU<br>4 S. MILGRIM<br>5 M. MENNA<br>6 S. LEONARD<br>7 J. COMLY<br>STR W. RYAN<br>COX D. CHRISTIF                       | 20. WASHINGTON COLLEGE C. C.<br>Bow R. DINW<br>2 J. ELKINS<br>3 J. MAYHEW<br>4 J. SHERMAN<br>5 J. BOWERMAN<br>6 J. JONES<br>7 M. SIMPSON<br>STR R. BARDEN<br>COX H. DURBERT      | 30. NEW YORK ROWING ASSOC.<br>Bow T. CIVETTA<br>2 K. WISEMAN<br>3 A. MAROTTA<br>4 P. MONACO<br>5 J. CLARKE<br>6 N. DENNEHY<br>7 N. IPARLATORE<br>STR H. MAZZUCCA<br>COX J. NICKELS | 40. SAYBROOK COLLEGE R. C.<br>Bow D. SUNDIN<br>2 B. BETTIGOLE<br>3 C. HFCK<br>4 C. PERIN<br>5 V. REYES<br>6 D. CHRISTIAN<br>7 J. PARDINGTON<br>STR P. OVERBY<br>COX *.<br>MAURA  |

## 14. Elite Ltwt. Singles

Yellow Bow Markers with Black Numbers

2:35pm

- |  |  |   |   |
|--|--|---|---|
| 1. I. KLKCATSKY<br>NEW YORK ATHLETIC CLUB  | 9. C. GUDNOV<br>UNDINE BARGE CLUB        | 17. P. HUMSTMAN<br>HARVARD UNIVERSITY   | 25. P. KURITZ<br>ECORSE BOAT CLUB         |
| 2. T. VAN DUSEN<br>RIVERSIDE BOAT CLUB     | 10. W. WELSH<br>NEW YORK ATHLETIC CLUB   | 18. D. PERESE<br>HARVARD UNIVERSITY     | 26. R. REJEAN<br>LAVAT R. C.              |
| 3. D. NORMILE<br>MALTA BOAT CLUB           | 11. C. CRAWFORD<br>UNDINE BARGE CLUB     | 19. W. ROESNER<br>CAMBRIDGE BOAT CLUB   | 27. W. EMMET II<br>RIVERSIDE BOAT CLUB    |
| 4. G. HAMILTON<br>CAMBRIDGE BOAT CLUB      | 12. R. PETERSEN<br>HARVARD UNIVERSITY    | 20. P. BILLINGS<br>M.I.T. BOAT CLUB     | 28. J. KRAMER<br>WESLEYAN UNIV. CREW CLUB |
| 5. W. BELDEN<br>UNDINE BARGE CLUB          | 13. X. MACTA<br>ARGONAUT ROWING CLUB     | 21. M. VEGA<br>HILLSBOROUGH ROWING CLUB | 29. A. ROSEBERG<br>YALE UNIVERSITY        |
| 6. R. JONES<br>CAMBRIDGE BOAT CLUB         | 14. B. EVENSEN<br>CAMBRIDGE BOAT CLUB    | 22. P. LISCOM<br>BLOOD STREET SCULLS    | 30. M. STROMBERG<br>UNDINE BARGE CLUB     |
| 7. B. THORNE<br>ST. CATHARINES ROWING CLUB | 15. S. WEIR<br>OLD DOMINION B. C.        | 23. M. STUDDT<br>FLORIDA INST. OF TECH. |   |
| 8. F. DULING<br>MALTA BOAT CLUB            | 16. M. FAHERTY<br>VIRGINIA, U. OF, R. A. | 24. B. PEATE<br>BLOOD STREET SCULLS     |   |

## 15. Lightweight Fours

Metropolitan District Commission Trophy  
Yellow Bow Markers with Black Numbers

3:00pm

- |   |   |  |   |
|---|---|--|---|
| 1. HARVARD UNIVERSITY<br>BOW M. CHAPMAN<br>2 M. YATES<br>3 M. KIGER<br>STR S. REYMOLDS<br>COX M. LEVITCK                | 11. M.I.T. BOAT CLUB<br>BOW M. PULASZEK<br>2 J. STHAIN<br>3 J. HAYNES<br>STR J. BIDIGARE<br>COX J. DONAHUE        | 21. SYRACUSE CHARGERS CLUB<br>BOW S. LIVINGSTON<br>2 C. DUNHAM<br>3 D. LOWDEN<br>STR J. GROTH<br>COX M. TARANTELLI     | 31. DARTMOUTH ROWING CLUB<br>BOW D. LOOMIS<br>2 D. RIKLEEN<br>3 G. BULLERJAHN<br>STR R. SHIMAN<br>COX B. DONNELLY |
| 2. RUTGERS UNIV.<br>BOW A. MATTSON<br>2 G. MURCHID<br>3 D. GRIEPEBURG<br>STR S. WAGNER<br>COX D. MINNEPUP               | 12. U. S. NAVAL ACADEMY<br>BOW C. DAVIDSON<br>2 T. GIASCOW<br>3 S. MCCLOSKEY<br>STR P. FILKINS<br>COX R. CHANG    | 22. MIXED ENTRY<br>BOW C. HOFFMANN<br>2 D. VOGEL<br>3 S. COLGAN<br>STR L. SODERBERG<br>COX D. GROSSMAN                 | 32. WORCESTER POLYTECH. R. A.<br>BOW F. MADIGAN<br>2 A. CLAMCY<br>3 R. NYCE<br>STR R. SENGSTAKEN<br>COX T. TAYLOR |
| 3. COLLEGE B.C. OF PENNSYLVANIA<br>BOW M. DAVIDSON<br>2 D. FARWELL<br>3 S. LAMAR<br>STR B. KAEN<br>COX K. COOK          | 13. PRINCETON UNIV. R. A.<br>BOW M. LEISTE<br>2 J. DEAN<br>3 L. FOX<br>STR P. WILSON<br>COX W. VICKERY            | 23. MIXED ENTRY<br>BOW R. LYNCH<br>2 D. ROOMEY<br>3 J. SONBERG<br>STR J. CAMINITI<br>COX R. BENNETT                    | 33. NEW YORK ATHLETIC CLUB<br>BOW F. PISANI<br>2 J. FOLFY<br>3 T. JOHNSTON<br>STR T. BONANNO<br>COX S. QUIGLIANO  |
| 4. HARVARD UNIVERSITY<br>BOW M. PICKERING<br>2 M. STIERER<br>3 M. LEAPEY<br>STR S. PARKER<br>COX M. CHESSIN             | 14. NEBRASKA, U. OF, CREW<br>BOW G. DOSTAL<br>2 P. KEENAN<br>3 M. CREAL<br>STR D. VOLKMAN<br>COX C. CLIFFORD      | 24. DARTMOUTH ROWING CLUB<br>BOW D. JACKSON<br>2 J. HAYSEN<br>3 R. BRADFORD<br>STR T. FOSTER<br>COX C. NAGLE           | 34. PENN A. C. ROWING ASSOC.<br>BOW H. BACKE<br>2 K. SWEENE<br>3 W. GLEASON<br>STR V. MICHELS<br>COX G. MCKERNAN  |
| 5. HARVARD UNIVERSITY<br>BOW M. COHEN<br>2 M. BRUSH<br>3 M. STETN<br>STR M. PARSONS<br>COX M. CONDEIRO                  | 15. M.I.T. BOAT CLUB<br>BOW G. ALLEN<br>2 C. DUDA<br>3 M. RYE<br>STR D. FINLAY<br>COX D. LEE                      | 25. UPPER CANADA COLLEGE<br>BOW M. BORDEN<br>2 R. LITTLE<br>3 J. HAYDEN<br>STR M. CHEESEMAN<br>COX B. SPICER           | 35. BOSTON UNIVERSITY<br>BOW G. BALLENGER<br>2 D. PROLMAN<br>3 C. REITER<br>STR K. MONAR<br>COX S. DOIG           |
| 6. MALTA BOAT CLUB<br>BOW L. BROWN<br>2 D. ECK<br>3 J. KIERNAN<br>STR J. HARRIS<br>COX J. BLICKLEY                      | 16. CONNECTICUT COLLEGE R.A.<br>BOW J. LEVINE<br>2 A. ROTHSELD<br>3 E. COLT<br>STR K. DURKIN<br>COX V. ROSENTHAL  | 26. CORNELL UNIVERSITY CREW<br>BOW C. BOGDEN<br>2 C. HAYES<br>3 R. CORMIER<br>STR E. ASERLIND<br>COX R. SCHAFFER       | 36. CHOATE SCHOOL<br>BOW J. DALY<br>2 R. QUINTILIAN<br>3 C. GARGALY<br>STR J. KRAVE<br>COX G. KNAUTH              |
| 7. PRINCETON UNIV. R. A.<br>BOW J. HAYES<br>2 J. SCHREPPLE<br>3 W. MATTHEWS<br>STR J. STOECKINIUS<br>COX D. VILLA       | 17. NIAGARA DIST. S. S.<br>BOW M. SOMMERWIL<br>2 T. MYELLER<br>3 D. SALTER<br>STR G. BELAU<br>COX D. SCHELLENBERG | 27. POTOMAC BOAT CLUB<br>BOW H. HERFINDAHL<br>2 M. COLESON<br>3 W. DULAP<br>STR D. RANSMEIER<br>COX P. WILKINS         | 37. BELMONT ROWING ASSOC. CLUB<br>BOW B. CANHA<br>2 H. DOWSE<br>3 R. SMITH<br>STR B. SHEETZ<br>COX C. KELLEY      |
| 8. U. S. NAVAL ACADEMY<br>BOW L. BECKER<br>2 M. CLARKE<br>3 S. FOGARTY<br>STR J. BOHLMAN<br>COX P. ELLIS                | 18. YALE UNIVERSITY<br>BOW D. SMITH<br>2 M. SHEPPARD<br>3 D. COOPER<br>STR R. MARTIN<br>COX M. WASSERMAN          | 28. WEST SIDE R. C.<br>BOW S. FPDAK<br>2 T. MAZZONE<br>3 D. PASCHKE<br>STR J. SICKLER<br>COX M. WHITTAKER              | 38. WORCESTER POLYTECH. R. A.<br>BOW G. WESPI<br>2 D. PATTEW<br>3 A. DREWIANY<br>STR P. CLAPP<br>COX T. SIMOES    |
| 9. WILLIAMS COLLEGE B. C.<br>BOW M. DAVIS<br>2 M. CLARK<br>3 M. LEACH<br>STR M. FORD<br>COX M. WILLIAMS                 | 19. YALE UNIVERSITY<br>BOW A. GOTSCHALL<br>2 A. PHINNEY<br>3 S. LANDEFELD<br>STR D. WIMACK<br>COX R. LUI          | 29. ITHACA COLLEGE<br>BOW R. ROSENTHAL<br>2 D. SALTZGABER<br>3 J. ROMAIN<br>STR P. SCHULTZ<br>COX L. FINSRUD           | 39. MIXED ENTRY<br>BOW J. GLENDINNING<br>2 D. MCKNIGHT<br>3 L. ESPOSITO<br>STR L. SOMPAYRAC<br>COX K. SWALLOW     |
| 10. COLLEGE B.C. OF PENNSYLVANIA<br>BOW J. STEFFENS<br>2 R. HERIQUES<br>3 J. JORDON<br>STR B. KONOPKA<br>COX C. KONOPKA | 20. MOSES BROWN SCHOOL<br>BOW P. THURBER<br>2 R. YOHN<br>3 C. COONEY<br>STR D. CHAPNICK<br>COX H. GELCH           | 30. GEORGETOWN UNIVERSITY R. A.<br>BOW H. PRITCHARD<br>2 S. NEWTON<br>3 P. MCNAMARA<br>STR R. OLEARY<br>COX R. FAHERTY | 40. NEW YORK ATHLETIC CLUB<br>BOW S. MICHAUD<br>2 W. BAPP<br>3 A. LYNCH<br>STR T. BARRETT<br>COX C. LEVY          |



1974 WINNER OF THE WOMEN'S EIGHT VESPER BOAT CLUB, PHILADELPHIA, PA.



# 16. Women's Eights

Blue Bow Markers with White Numbers

3:20pm

- |  |  |   |  |
|--|--|---|--|
| 1. VESPER B. C.<br>BOW M. JONIK<br>2 A. JONIK<br>3 A. HAYES<br>4 I. HODGE<br>5 A. DEFRANTZ<br>6 P. BFHRENS<br>7 C. MENGES<br>STR D. BRACELAND<br>COX M. DONOHUE                        | 11. TRINITY COLLEGE<br>BOW E. KELLY<br>2 C. OVERHOLT<br>3 E. PORTER<br>4 B. BASS<br>5 D. PACKER<br>6 L. RICHARDS<br>7 J. SCALA<br>STR J. OWEN<br>COX E. LEARNED  | 21. SIMSURY H. S. CREW<br>BOW J. SPATCHER<br>2 S. ZAYLOR<br>3 S. MORAN<br>4 M. SWINGLE<br>5 P. THORPE<br>6 G. ARBOTT<br>7 D. MORLAND<br>STR L. ANDERSON<br>COX UNKNOWN                | 31. NEW HAMPSHIRE, WOMEN'S CREW<br>BOW J. TRIPONI<br>2 M. MEAD<br>3 M. HARDWICK<br>4 P. FISHER<br>5 R. WARNOCK<br>6 A. SCHOFFIELD<br>7 G. FINLEY<br>STR K. CORRIGAN<br>COX S. LUDWIG   |
| 2. COLLEGE B.C. OF PENN<br>BOW V. HELENSKI<br>2 S. DUGAN<br>3 M. MACLEAN<br>4 J. CASHIN<br>5 N. STORRS<br>6 S. MORGAN<br>7 L. STAINES<br>STR W. ROYDEN<br>COX H. HATTON                | 12. NOTRE DAME R. C.<br>BOW S. REIS<br>2 M. BRADY<br>3 J. KSEMIK<br>4 B. RILEY<br>5 C. LATRONICA<br>6 M. GUMBLE<br>7 J. GORMLEY<br>STR M. FITZSIMONS<br>COX R. GILL                                      | 22. WESLEYAN UNIV. CREW CLUB<br>BOW E. FULSTONE<br>2 S. SMITH<br>3 M. FAGELSUN<br>4 S. WHITE<br>5 S. BERGER<br>6 K. KEELER<br>7 S. MOLYNEAUX<br>STR S. STUTTARD<br>COX J. ALEXANDER   | 32. DARTMOUTH ROWING CLUB<br>BOW D. ROBECK<br>2 S. MCALLISTER<br>3 N. PARSSINEN<br>4 J. GEER<br>5 H. STEVENS<br>6 C. DAVIS<br>7 S. WOYNA<br>STR M. JOHNSON<br>COX K. CONNOLLY          |
| 3. MINNESOTA U. CREW<br>BOW V. GORDON<br>2 J. DOUGHERTY<br>3 L. HAGNEY<br>4 M. HAER E<br>5 S. SCHNEIDERHAN<br>6 G. MADSON<br>7 N. BRENFECHE<br>STR M. FINANDT<br>COX M. GARDNER        | 13. PHILLIPS EXETER ACADEMY<br>BOW W. BLAUFUS<br>2 M. LAUGHLIN<br>3 M. GRAVES<br>4 T. ANTRIM<br>5 L. STANTON<br>6 A. JOHNSON<br>7 L. PAQUETTE<br>STR A. MARDEN<br>COX L. WEISBERG                        | 23. MARIST COLLEGE<br>BOW K. BRENNAN<br>2 M. COURCHAINF<br>3 A. CULLINANE<br>4 F. CARMODY<br>5 A. DEFRANCO<br>6 S. MARLETT<br>7 R. COURTNEY<br>STR S. MALLETT<br>COX W. SAITTA        | 33. CONNECTICUT COLLEGE R.A.<br>BOW S. MURPHY<br>2 J. BURKE<br>3 B. GOODMAN<br>4 M. ROBINSON<br>5 C. SHORES<br>6 M. VEACH<br>7 P. SHARP<br>STR L. HAMILTON<br>COX UNKNOWN              |
| 4. BOSTON UNIVERSITY<br>BOW J. MISKY<br>2 I. DICKERSON<br>3 I. BLAICHER<br>4 N. MULLANE<br>5 L. SHURTEFF<br>6 C. COMERFORD<br>7 M. VERDERAME<br>STR J. LANNING<br>COX R. FINN          | 14. YALE U. WOMEN'S VARSITY CREW<br>BOW A. WEBER<br>2 S. YEU<br>3 N. WISCHHUSEN<br>4 R. DERIC<br>5 M. FULLER<br>6 V. GILDER<br>7 C. SALOMON<br>STR J. BROWN<br>COX S. KETCHUM                            | 24. CLARK UNIVERSITY<br>BOW A. AIELLO<br>2 M. LEADER<br>3 P. MEVS<br>4 A. MYERS<br>5 M. KILLEN<br>6 D. KIELY<br>7 S. CHIN<br>STR D. WAYNE<br>COX D. EYGES                             | 34. RUTGERS UNIV.<br>BOW A. KOIV<br>2 S. GRIFFIT<br>3 G. DILLON<br>4 K. BULAS<br>5 N. CAPIZOLA<br>6 L. WAYTE<br>7 H. NASH<br>STR M. HERMAN<br>COX S. WEINSTEIN                         |
| 5. PRINCETON U. WOMEN'S CREW<br>BOW S. BURGESS<br>2 L. SANDERS<br>3 L. FREDERICKSON<br>4 N. UGHETTA<br>5 V. CAMPBELL<br>6 D. HEMPHIL<br>7 C. BROWN<br>STR A. CARLSON<br>COX J. PARADIZ | 15. RADCLIFFE COLLEGE CREW<br>BOW A. BANCROFT<br>2 F. FELD<br>3 W. RAMSEY<br>4 R. NORRIS<br>5 K. ESSICHS<br>6 N. SHORE<br>7 J. CLARK<br>STR J. ROY<br>COX N. HADLEY                                      | 25. WISCONSIN, U. OF, CREW<br>BOW K. ELA<br>2 D. SONNENBEURG<br>3 P. MCCARTHY<br>4 J. ZOCH<br>5 D. OETZEL<br>6 M. KNIGHT<br>7 L. ZANICHLOWSKY<br>STR C. GRAVES<br>COX B. BOSIO        | 35. SYRACUSE UNIV. WOMEN'S CREW<br>BOW D. ANDERSON<br>2 M. HILLINGER<br>3 J. KALPNER<br>4 L. SHEELEY<br>5 L. BARNETT<br>6 R. NEEDHAM<br>7 L. COCH<br>STR L. DENBLER<br>COX S. DIRHAM   |
| 6. MIT, BOAT CLUB<br>BOW A. COMAN<br>2 M. MONTGOMERY<br>3 R. MEANS<br>4 K. RODDIS<br>5 J. MALAKTE<br>6 J. PENDLETON<br>7 R. BECKMAN<br>STR C. TRACEY<br>COX E. PLASSE                  | 16. NORTHFIELD MT. HERMON SCHOOL 26, MIXED ENTRY<br>BOW L. GEISSENHAINER<br>2 P. KUALL<br>3 M. CLIFFORD<br>4 S. CLIFFORD<br>5 M. PISCUSKAS<br>6 M. BOOTH<br>7 L. DURGIN<br>STR L. MORGAN<br>COX M. STULL | 26. WISCONSIN, U. OF, CREW<br>BOW C. MAISONNEUVE<br>2 C. PEPIN<br>3 G. BERNIER<br>4 M. LEFEBVRE<br>5 J. LEPAGE<br>6 E. BOURBEAU<br>7 B. STEVENSON<br>STR M. DRAEGER<br>COX J. DELISLE | 36. DUKE CREW<br>BOW M. MATCHINSKE<br>2 W. MAC LEOD<br>3 P. SYMMIS<br>4 C. COSTELLO<br>5 T. WALSH<br>6 J. TREAT<br>7 S. DARBY<br>STR P. BROWN<br>COX A. GARBER                         |
| 7. WILLIAMS COLLEGE B. C.<br>BOW * ARBOTT<br>2 * HARDESTY<br>3 * YOUNGLING<br>4 * EISENMENGER<br>5 * SYMINGTON<br>6 * JACKSON<br>7 * TUTTLE<br>STR * HAKALA<br>COX * BORGES            | 17. BARNARD COLLEGE<br>BOW C. GARRITY<br>2 G. PUGH<br>3 A. CANDY<br>4 T. ZAPINSKY<br>5 H. ROSENBAUM<br>6 H. PLATT<br>7 J. RICHARDS<br>STR K. KIDWELL<br>COX C. KORNGOLD                                  | 27. PENN WOMEN'S CREW<br>BOW A. NICOLAI<br>2 P. BOLLINGER<br>3 B. WEST<br>4 M. COSTANZO<br>5 P. TELESKA<br>6 I. MCELWAIN<br>7 H. ZABLOCKI<br>STR C. BECKERLE<br>COX J. DIBELLA        | 37. ITHACA COLLEGE<br>BOW M. SPRAGUE<br>2 J. VOLK<br>3 D. KIMBALL<br>4 L. CREELMAN<br>5 R. BRUMET<br>6 M. COONEY<br>7 E. ANDREW<br>STR J. RIFE<br>COX J. BARTKOWSKY                    |
| 8. BROWN UNIVERSITY<br>BOW L. BORGES<br>2 E. DENOOYER<br>3 D. GILES<br>4 J. HANNAFIN<br>5 K. HAYES<br>6 K. HINRICHSON<br>7 A. LISTON<br>STR J. MACKENZIE<br>COX P. MAGUIRE             | 18. KENT SCHOOL BOAT CLUB<br>BOW R. BEYER<br>2 M. KNIGHT<br>3 H. WATSON<br>4 T. SUTHERLAND<br>5 A. WILLIAMS<br>6 S. GALLUP<br>7 T. RYAN<br>STR V. MARSH<br>COX S. WRAY                                   | 28. MIDDLETOWN ROWING CLUB<br>BOW D. BERRY<br>2 K. STIRLEY<br>3 C. MULCONRY<br>4 L. FISHER<br>5 A. BOUCHER<br>6 M. TUTTLE<br>7 S. KELSEY<br>STR R. SNOW<br>COX P. RURINGOW            | 38. NEW HAVEN ROWING CLUB<br>BOW I. YEH<br>2 C. STOWE<br>3 R. ALEXANDER<br>4 L. DE BETHUNE<br>5 S. FISHER<br>6 E. MATHIES<br>7 I. FROST<br>STR R. HAPFNER<br>COX S. KORB               |
| 9. U. MASS WOMEN'S CREW CLUB<br>BOW E. GALLANT<br>2 M. LAFOSSE<br>3 P. KNOWLTON<br>4 J. RYAN<br>5 M. LEONARD<br>6 J. FAGAN<br>7 P. SELLEW<br>STR A. ARONSON<br>COX N. TOMPKINS         | 19. SMITH COLLEGE CREW<br>BOW B. BELANUS<br>2 C. DURBIN<br>3 S. BEVIER<br>4 M. STEENSTRUP<br>5 M. SALOVNARA<br>6 V. BARTHOLOW<br>7 C. HARSHMAN<br>STR S. SOUTHER<br>COX UNKNOWN                          | 29. PHILLIPS ACADEMY<br>BOW M. BUTTRICK<br>2 A. LORD<br>3 A. STRAYER<br>4 S. CLEVELAND<br>5 E. LAVERACK<br>6 K. ELLISON<br>7 V. MAYNARD<br>STR A. PAWLOWSKI<br>COX E. CHERNAK         | 39. RHODE ISLAND, U. OF, R. A.<br>BOW J. O'CONNELL<br>2 K. MC NALLY<br>3 J. CONTACESSA<br>4 A. CHONIERE<br>5 G. MOUSIN<br>6 P. COSTELLO<br>7 L. BECK<br>STR B. ARRAMSON<br>COX UNKNOWN |
| 10. WELLESLEY COLLEGE CREW<br>BOW L. BROOKS<br>2 K. CUNNINGHAM<br>3 S. KNIGHT<br>4 L. CARTMELL<br>5 B. ALEXANDER<br>6 H. FREMONT<br>7 P. O'NEAL<br>STR F. MONSOR<br>COX M. STEPHENSON  | 20. VIRGINIA, U. OF, WOMEN'S R. A.<br>BOW B. HOWARD<br>2 M. BRADSTOCK<br>3 K. BELLER<br>4 K. CHRISTY<br>5 L. HUKO<br>6 L. POE<br>7 R. BELCHER<br>STR C. LEE<br>COX R. CARPENTER                          | 30. CORNELL WOMEN'S CREW<br>BOW A. OMEILL<br>2 M. BARTA<br>3 C. REAY<br>4 R. CLARKE<br>5 K. MONTAGUE<br>6 J. MULLENHUFF<br>7 P. DORGE<br>STR A. FISCHER<br>COX D. HARRIS              | 40. WORCESTER POLYTECH. R. A.<br>BOW T. CTRONE<br>2 D. MCCONCHIE<br>3 K. KTRLA<br>4 L. MATTIE<br>5 M. DONOVAN<br>6 D. BRENNAN<br>7 T. TUTTLE<br>STR A. MADARA<br>COX E. KING           |

# 17. Elite Singles

Curtis Trophy  
White Bow Markers with Red Numbers

3:35pm

- |   |   |   |  |
|---|---|---|--|
| 1. J. DIETZ<br>NEW YORK ATHLETIC CLUB     | 11. M. VERLIN<br>NEW YORK ATHLETIC CLUB | 21. W. REIMANN<br>CAMBRIDGE BOAT CLUB         | 31. C. SMALE<br>ARGONAUT ROWING CLUB           |
| 2. P. WILSON<br>CAMBRIDGE BOAT CLUB       | 12. K. LYNCH<br>CAMBRIDGE BOAT CLUB     | 22. P. ANDRE<br>EQUIPE DU QUEBEC CLUB D'AVN   | 32. A. BODELL<br>BOSTON UNIVERSITY             |
| 3. F. GOOD III<br>NEW YORK ATHLETIC CLUB  | 13. J. ST CLAIR<br>VESPER B. C.         | 23. J. KIRSCH<br>WISCONSIN, U. OF, CREW       | 33. C. LEDUC<br>LAVAL U. C.                    |
| 4. H. PARKER<br>HARVARD UNIVERSITY        | 14. R. LYNCH<br>POTOMAC BOAT CLUB       | 24. A. POST<br>VESPER B. C.                   | 34. F. WALKER II<br>CORNELL UNIVERSITY CREW    |
| 5. J. HIGGINSON<br>HARVARD UNIVERSITY     | 15. S. TALBOT II<br>CAMBRIDGE BOAT CLUB | 25. L. PREVOST<br>EQUIPE DU QUEBEC CLUB D'AVN | 35. G. LEIGTON<br>ARGONAUT ROWING CLUB         |
| 6. R. BYRD<br>U. S. NAVAL ACADEMY         | 16. F. SUTTER<br>MALTA BOAT CLUB        | 26. H. HUBER<br>WESTERN ONTARIO, U. R. C.     | 36. C. DICKEY<br>UNDINE BARGE CLUB             |
| 7. H. HAMILTON<br>NORTHELD MT. HERMON SCH | 17. P. BEAMAN<br>M.I.T. BOAT CLUB       | 27. S. DUBOIS<br>ROUCHERVILLE ROWING CLUB     | 37. L. BOURASSA<br>EQUIPE DU QUEBEC CLUB D'AVN |
| 8. D. MCGALE<br>RIVERSIDE BOAT CLUB       | 18. B. BEALL<br>BOSTON UNIVERSITY       | 28. M. TUTTLE<br>CALIFORNIA, U. OF.           | 38. C. VIOLA<br>UNDINE BARGE CLUB              |
| 9. J. CASTELLAN<br>FAIRMONT R. A.         | 19. J. RASLAVSKY<br>UNDINE BARGE CLUB   | 29. S. CLARK<br>CORNELL UNIVERSITY CREW       | 39. F. BABRI<br>ARGONAUT ROWING CLUB           |
| 10. S. KILLEN<br>NEW YORK ATHLETIC CLUB   | 20. G. STONE<br>HARVARD UNIVERSITY      | 30. R. CLAIR<br>MASSACHUSETTS, U. OF, R. A.   | 40. D. HEALEY<br>CAMBRIDGE BOAT CLUB           |



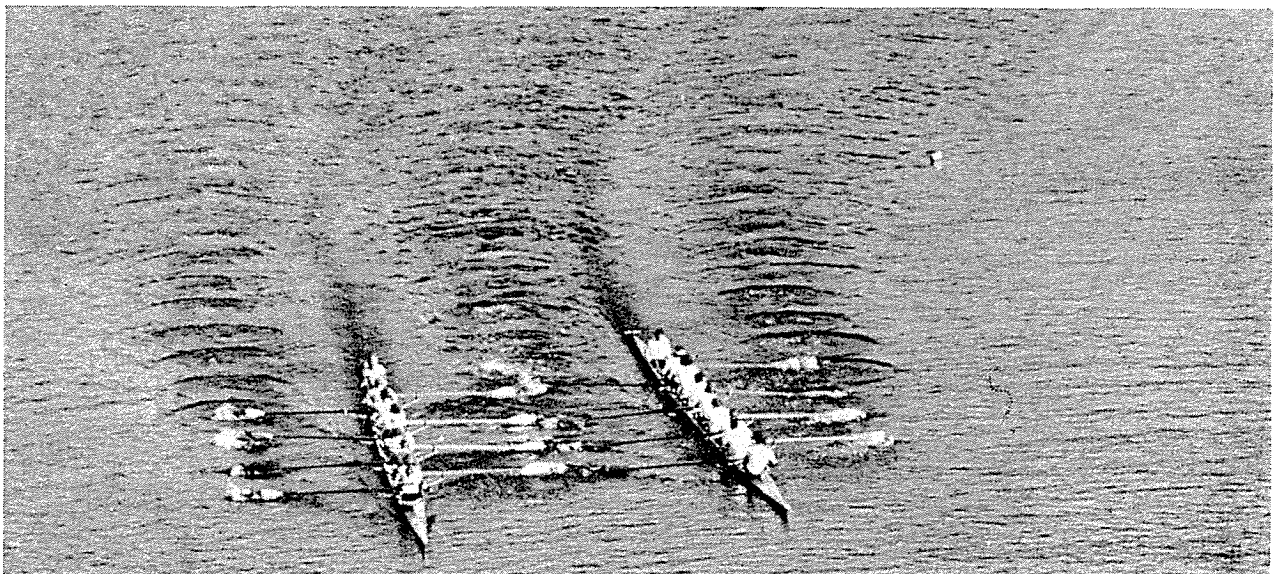
JUNIOR EIGHTS

# 18. Elite Eights

Boston Globe Challenge Trophy  
White Bow Markers with Red Numbers

4:00pm

- |   |   |   |   |
|---|---|---|---|
| 1. CORNELL UNIVERSITY CREW<br>BOW B. BEHM<br>2 C. MOLL<br>3 K. WALSH<br>4 C. DRAKE<br>5 S. DAHLEN<br>6 G. LOCKE<br>7 H. EVERHART<br>STR C. LUBSEN<br>COX D. STORY                 | 8. BOSTON UNIVERSITY<br>BOW H. ZAIS<br>2 T. CLASSEN<br>3 D. DEITZ<br>4 T. SANTORO<br>5 F. GARDNER<br>6 M. WALTON<br>7 F. BUSSER<br>STR S. MC CAIG<br>COX S. FREFOMAN            | 15. PRINCETON UNIV. R. A.<br>BOW R. HOYLE<br>2 D. KELLER<br>3 P. KELLY<br>4 D. KINZEP<br>5 L. SMITH<br>6 R. WILLOUGHBY<br>7 G. STRATTON<br>STR S. DAWSON<br>COX M. CUNNINGHAM | 22. SYRACUSE ALUMNI R. A.<br>BOW A. HOGTSH<br>2 R. TREMBLAY<br>3 T. BROWN<br>4 T. EVANCIE<br>5 M. PLUMB<br>6 P. JIRAK<br>7 D. TOUNSLEY<br>STR M. LYVERS<br>COX M. LUKOFF                  |
| 2. WISCONSIN, U. OF, CREW<br>BOW M. BOYLE<br>2 T. SCHUCHARDT<br>3 J. BAUCH<br>4 F. JACKSON<br>5 J. STORCK<br>6 J. MERCIER<br>7 F. ROBERTSON<br>STR P. LITSCHER<br>COX G. ASKINS   | 9. MASSACHUSETTS, U. OF, R. A.<br>BOW B. CULLEN<br>2 D. FERGUSON<br>3 F. NECZYPOR<br>4 J. MOYNIHAN<br>5 M. MELVIN<br>6 D. FROST<br>7 R. MAAGERO<br>STR S. LOOMER<br>COX R. BERG | 16. DARTMOUTH ROWING CLUB<br>BOW S. CHARDON<br>2 A. JESSIMAN<br>3 M. WALSH<br>4 P. FOERSTER<br>5 K. SOMERVILLE<br>6 T. HULL<br>7 J. BOLTON<br>STR D. FOWLER<br>COX D. GARDNER | 23. FLORIDA INST. OF TECH.<br>BOW R. SCHIED<br>2 S. JOHNSON<br>3 B. SMITH<br>4 W. GUEMPLE<br>5 D. BEE<br>6 J. BROCATO<br>7 M. DAVENPORT<br>STR P. LANGLEY<br>COX M. BUSHING               |
| 3. M.I.T. BOAT CLUB<br>BOW J. HEALEY<br>2 W. FRY<br>3 C. JUNG<br>4 D. JOHNSTON<br>5 T. HIGGINS<br>6 T. CRAWFORD<br>7 C. CHRISTENSEN<br>STR B. WELLENDORF<br>COX T. FOTTI          | 10. NORTHEASTERN UNIVERSITY<br>BOW S. LOWE<br>2 R. HAPPEMAN<br>3 G. DOUGAN<br>4 J. SLANEK<br>5 S. DAVIES<br>6 T. LOWE<br>7 M. HALTON<br>STR P. MARTINDALE<br>COX D. BROWNLIE    | 17. U. S. NAVAL ACADEMY<br>BOW L. DAVIDSON<br>2 E. MCMAIR<br>3 K. KROZNER<br>4 P. BRISTOL<br>5 S. BEATON<br>6 M. MCQUISTON<br>7 E. SMITH<br>STR K. KNOITZER<br>COX J. MCCOWAN | 24. COLLEGE R.C. OF PENN<br>BOW P. GROVE<br>2 M. BRANDES<br>3 D. LEONARD<br>4 J. SCHONMAKER<br>5 P. BROGEL<br>6 B. SAWYER<br>7 R. BARTLETT<br>STR L. HARRISON<br>COX C. KONOPKA           |
| 4. HARVARD UNIVERSITY<br>BOW J. WHITE<br>2 D. BITBY<br>3 R. STEVENSON<br>4 G. ATTKEN<br>5 J. BROCK<br>6 W. KERINS<br>7 J. WRIGHT<br>STR M. BEACH<br>COX B. LARSON                 | 11. HARVARD UNIVERSITY<br>BOW T. SMITH<br>2 D. KEEFE<br>3 E. TIMMINS<br>4 M. RECKTENWALD<br>5 M. LOUCKS<br>6 P. BOGHOSIAN<br>7 T. HOWES<br>STR P. REYNOLDS<br>COX J. ROTHSTEIN  | 18. COLLEGE B.C. OF PENN<br>BOW J. CARTUS<br>2 T. ECKERT<br>3 T. MUSCOLLI<br>4 R. PACZEWSKI<br>5 W. DEMERS<br>6 B. STEKL<br>7 P. MUDROCH<br>STR B. EPKE<br>COX G. GOLDRING    | 25. M.I.T. BOAT CLUB<br>BOW D. LOOZE<br>2 J. MILLER<br>3 D. URDWAY<br>4 C. DAVIES<br>5 J. GORMAN<br>6 G. CHISHOLM<br>7 A. KERNOHAN<br>STR J. LEFFLER<br>COX J. CLARK                      |
| 5. YALE UNIVERSITY<br>BOW C. COGGINS<br>2 D. CRAVA<br>3 J. HAMILTON<br>4 C. KATTNER<br>5 T. RUTHERFORD<br>6 T. DEBEVOISE<br>7 J. DUKE<br>STR T. WOOD<br>COX J. PRINTZLAV          | 12. HARVARD UNIVERSITY<br>BOW C. GAVIN<br>2 M. POLK<br>3 T. DALY<br>4 J. MC LAFFERTY<br>5 J. DIEHL<br>6 D. CARVALHO<br>7 R. WALES<br>STR K. WILLIAMS<br>COX J. MC GRATH         | 19. UNION BOAT CLUB<br>BOW M. LIVINGSTON<br>2 C. LIVINGSTON<br>3 W. HOBBS<br>4 E. CLAPP<br>5 T. MICKELSON<br>6 P. RAYMOND<br>7 F. HOBBS<br>STR L. TERRY<br>COX P. HOFFMAN     | 26. YALE UNIVERSITY<br>BOW D. BUNNELL<br>2 D. GRIFFIN<br>3 T. MCGRAW<br>4 B. WEBB<br>5 V. MCCALL<br>6 D. CREED<br>7 R. KAHN<br>STR M. STOVER<br>COX K. SOUTHWORTH                         |
| 6. WISCONSIN, U. OF, CREW<br>BOW P. SCHROETER<br>2 D. MOECHEER<br>3 R. GRAVES<br>4 N. DOMINQUES<br>5 B. GILMORE<br>6 D. KUFFAHL<br>7 J. SULLIVAN<br>STR J. KNIGHT<br>COX P. SMITH | 13. VESPER B. C.<br>BOW P. SIMONE<br>2 B. SHELTON<br>3 T. ADAMS<br>4 G. PIATENDOSI<br>5 J. MATHENS<br>6 C. COFFEY<br>7 P. HAYES<br>STR D. VREUGHDENHIL<br>COX J. HARTIGAN       | 20. DETROIT BOAT CLUB<br>BOW S. SHORE<br>2 T. VIGLIOTTI<br>3 M. OBRIEN<br>4 D. WOJDYLA<br>5 B. MILLER<br>6 B. BRENNAN<br>7 J. CARABABAS<br>STR M. KLEMHER<br>COX M. MILLER    | 27. NORTHEASTERN UNIVERSITY<br>BOW K. HACKINNON<br>2 D. LISTER<br>3 M. MANHARD<br>4 D. ELORANTA<br>5 L. GLUCKMAN<br>6 J. MASLOWSKI<br>7 R. O'CONNOR<br>STR R. ESPESETH<br>COX B. CHISHOLM |
| 7. RUTGERS UNIV.<br>BOW B. BERICAL<br>2 D. ROONEY<br>3 A. HAC NABR<br>4 D. IPPOLITO<br>5 J. CANNON<br>6 F. BORCHELT<br>7 A. BERGANINI<br>STR R. CZECH<br>COX B. CROFT             | 14. U. S. COAST GUARD ACAD.<br>BOW K. GRADY<br>2 R. ROSSEAU<br>3 J. GENTILE<br>4 C. GREGUS<br>5 M. SHEVOCK<br>6 D. INGLES<br>7 D. FLUDDY<br>STR P. LANGLOIS<br>COX G. WILTSHIRE | 21. ITHACA COLLEGE<br>BOW K. FREE<br>2 B. O'HARE<br>3 E. REAMS<br>4 D. ALBERTS<br>5 A. DAMONE<br>6 L. SHEELEY<br>7 S. KAHN<br>STR D. PUSTEIL<br>COX A. RUBIN                  | 28. HARVARD BUSINESS SCH B. C.<br>BOW P. WEBSTER<br>2 P. BLUM<br>3 R. STEWART<br>4 J. ROBERTS<br>5 G. KELLNER<br>6 C. HUNTOON<br>7 C. RODRIGUES<br>STR J. COOK<br>COX K. OEI              |



JUNIOR EIGHTS



